

CREW ORANGE COUNTY PRESENTS

SPURE AWARDS

[AV] IRVINE

16500 SCIENTIFIC, IRVINE, CA 92618

10TH ANNUAL

OCT • 15 • 2021

5:30 - 9:30 PM

KEYNOTE SPEAKER



ANNETTE WALKER
PRESIDENT
CITY OF HOPE ORANGE COUNTY

MASTER OF CEREMONIES



SUZANNE KENNEDY
NATIONAL TITLE COORDINATOR
CHICAGO TITLE NCS

SPONSORED BY

PREMIER

GRAND

DISTINGUISHED

BANK OF AMERICA

COX BUSINESS

ORANGE COUNTY BUSINESS JOURNAL
The Community of Business
www.ocbj.com

nuveen REAL ESTATE

PASSCO
A NATIONAL REAL ESTATE COMPANY
est. 1984

BASCOM
THE BASCOM GROUP

Hendly

GREAT SCOTT
TREE CARE

CLUNE CONSTRUCTION

KPRS FIVE POINT

WESTERN NATIONAL PROPERTY MANAGEMENT
A WESTERN NATIONAL GROUP COMPANY

City of Hope ORANGE COUNTY

CBRE

KeyBank Real Estate Capital

troutman pepper

EVENT

ABLE SERVICES | ALLEN MATKINS | BROWER GROUP | CAPROCK PARTNERS | CCS
COLLIERS INTERNATIONAL | CONCRETE WEST CONSTRUCTION | LBA REALTY | LPA
OLTMANS CONSTRUCTION CO. | SNYDER LANGSTON | STRADLING | VERSITY

VALET

HOWARD BUILDING CORPORATION | LINCOLN PROPERTY COMPANY | PACIFIC LIFE

PHOTOBOOTH | STEP & REPEAT

BLUSKY
NUVEEN

MEDIA PARTNERS

BISNOW | CONNECT MEDIA | PALADIN
PARKING CONCEPTS | WESTERN REAL ESTATE BUSINESS

CREW ORANGE COUNTY PRESENTS

SPiRE AWARDS

SPIRE COMMITTEE CHAIRS SPOTLIGHT



Anita Chen
Analyst, Debt Originations
Nuveen Real Estate

Anita is an Analyst for the debt originations platform at Nuveen Real Estate, an investment management firm and a wholly-owned subsidiary of financial planning company, TIAA. With over five years of brokerage experience, Anita analyzes, sources, and originates fixed and floating rate debt investments, throughout the capital stack. She conducts market research, loan underwriting, and due diligence for both core and structured financing opportunities which includes but is not limited to conducting discounted cash flows and analyzing the financial and credit worthiness of properties, markets, and borrowers.

Anita is an emerging leader in Orange County's commercial real estate community and is an active member of CREW Orange County, where she currently serves as a co-chair for both the SPIRE Awards and College Outreach.

Anita's principles of self-development, continuous education and building networks align with CREW's initiative in the advancement of women in commercial real estate. She values the resources, relationships, and leadership roles CREW Orange County has offered her during the course of her personal and professional development.



Dayna Neville
Corporate Marketing Manager
Passco Companies

As Corporate Marketing Manager at Passco Companies, Dayna Neville is responsible for the implementation of strategic marketing materials designed for the company's nationwide multifamily portfolio. She is also responsible for creative direction, graphic design, social media, print concepts, and website management. Dayna provides support to one of the industry's leading marketing specialists: Stacy Stemen, Senior Vice President, Corporate Marketing & Development.

Since entering the commercial real estate industry in 2014, Dayna has worked in various aspects of the investment sales and leasing processes. Dayna began her commercial real estate career at Colliers International, where she was a Client Services Specialist. She focused on the disposition of institutional and private investments for the Orange County retail investments team. Her more recent role as Brokerage Services Specialist at Newmark focused on providing support to the Orange County retail leasing teams and members of the West Coast retail capital markets investment sales teams.

Dayna attended the University of California, Riverside where she received a Bachelor's degree in Linguistics. Her professional affiliations include the National Multifamily Housing Council (NMHC), Alternative and Direct Investment Securities Association (ADISA) and Commercial Real Estate Women (CREW) Orange County.



2021 Board Members



NICOLE MORSE
President
Wells Fargo



STACY NISHIOKA
President Elect
Irvine Company



SUZANNE KENNEDY
Immediate Past President
Chicago Title NCS



JOANNE LUCAS
Treasurer
Greystar



KRISTEN SOLORZANO
Secretary
Manulife Real Estate Finance Group



GWEN RIBAR
Director - Membership
Wright, Finlay & Zak, LLP



PAULINE HALE
Director - Philanthropy
Altus Group



DAWNA FRY
Director - Programs
BluSky



KEN KLADORIS
Director - Sponsorship
Platinum Wealth

The Tenth Annual SPIRE Awards Judges



BROOKE BIRTCHER GUSTAFSON
Managing Director
Birtcher Development



BRUCE FISCHER
Chair of the West Coast Real Estate
Practice & Co-Managing Shareholder
Greenberg Traurig



ED HANLEY
President & Founder
Hanley Investment



JULIE RIOS
Vice President of Western Region Marketing
Newmark



KATE SEABAUGH
Regional Vice President, Financial
Planning and Analysis
Link Logistics Real Estate



PARKE MILLER
Executive Vice President
LPC West



SANDRA JACOBSON
Partner
Allen Matkins



STACEY OLSON
Director of Sustainable Design
Gensler



TOM LAWLESS
Director
Hines



TREVOR BROTMAN
Managing Director
Wells Fargo

INTRODUCING
**LENNAR FOUNDATION
 CANCER CENTER**
 AT CITY OF HOPE ORANGE COUNTY

Lifesaving treatment. Pioneering research. Compassionate care. **Opening in 2022.**

City of Hope | ORANGE COUNTY

CityofHope.org/OC (949) 763-2204

© 2021 City of Hope



CREW Orange County Honors 2021 Scholarship Winner

CREW Orange County is pleased to recognize Brittney Delgado of California State University, Fullerton as its 2021 Academic Scholarship recipient

Inspired by her grandmother, a residential real estate agent, and her work experiences at Theo Pacific Corporation, American First Credit Union, and CALSTRS, Brittney's goal is to become a real estate analyst for an acquisition and asset management firm. Brittney is currently a senior at California State University, Fullerton, and has plans to pursue her master's degree in real estate upon graduation. She will be applying to the University of Pennsylvania's Wharton School of Business and Cal State Fullerton's MBA program in the fall. Her involvement with multiple clubs on campus, including the Real Estate Association, while balancing full time studies and part time jobs shows her determination and drive to reach her goals. CREW Orange County is honored to provide assistance to this outstanding young woman.



Brittney Delgado

CREW Orange County supports the education of future leaders through an annual scholarship program, which is open to female US and Canadian students 18 years of age and older who live, work and/or attend school in Orange County.

Scholarship recipients are selected based on academic record; commitment to a career in the commercial real estate industry; work, internship and volunteer experience; as well as other notable accomplishments.

Brittney will be recognized on stage during the 2021 CREW Orange County SPIRE Awards, taking place at [AV] in Irvine on Friday, October 15, 2021.

As the 2021 Scholarship recipient, Brittney will receive \$5,000 toward tuition and books, as well as:

- A complimentary undergraduate student membership with CREW Orange County and CREW Network
- Free registration to attend the 2021 SPIRE Awards

"The CREW Orange County College Scholarship program not only aids recipients financially, but encourages career advancement for the next generation of female leaders and welcomes them into a built-in network of leaders within the industry," says Anita Chen, Debt Originations Analyst for Nuveen Real Estate and Co-Chair for CREW Orange County's College Outreach. "The scholarship provides applicants with the invaluable opportunity of kick starting their career with support from a strong network of industry connections."

Past winners of the CREW Orange County Scholarship include:

- Ellen Desper, Undergraduate Student, USC Marshall School of Business 2020-2021 Academic Year
- Chantayne Wilchewski, Graduate Student, Embry-Riddle Aeronautical University 2019-2020 Academic Year
- Amy Lei Hu, Undergraduate Student, University of California, Irvine 2017-2018 Academic Year
- Helia Daryabeigy, Graduate Student, University of California, Irvine 2016-2017 Academic Year

If you are interested in supporting the CREW Orange County Scholarship fund or College Outreach program, please contact us:

Anita Chen
College Outreach Co-Chair
Nuveen Real Estate
anita.chen@nuveen.com

Dayna Neville
College Outreach Co-Chair
Passco Companies
dneville@passco.com

Angela Gomez-Jones
College Outreach Committee Member
Link Logistics Real Estate
agomezjones@linklogistics.com

ABOUT CLUNE Clune Construction is an employee-owned, national general contractor, providing construction management services for some of the most respected companies in the world. With six offices across the U.S., Clune manages over \$1 billion in commercial and mission-critical projects annually and was ranked one of the Best Places to Work.

©Marc Welsberg

clunegc.com | CA License #732107



CAN YOU REACH YOUR GOALS?

Does your corporate space contribute or detract from your efforts? Does it help you achieve bigger goals? For 30 years Caliber Construction has been behind the best and the brightest companies in Los Angeles and Orange Counties creating the spaces that support them to achieve their objectives. A Caliber-constructed space can support your team to collaborate, ideate and execute.



Caliber
CONSTRUCTION, INC.

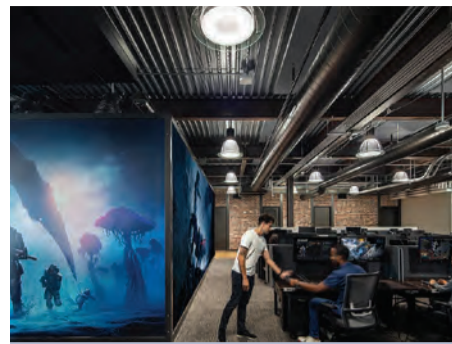
CaliberConstructionInc.com | 714-255-2700

LICENSE NO. 635842

TENANT IMPROVEMENT NOMINEES



Project: Alteryx Tenant Improvement
Nominee(s):
KPRS Construction
 Greg Seman, Project Manager
 Randy Workman, Division Manager, Partner
Wolcott Architecture
 Connie Northup, Senior Project Manager
Gardiner & Theobald Inc.
 Victoria Nakamura, Associate Director



Project: Microsoft InXile
Nominee(s):
KPRS Construction
 Susy Dowell, Project Manager
 Randy Workman, Division Manager, Partner
Abramson Architects
 Björn Schrader, Partner
Colliers International
 Navin Ramani, Senior Vice President



Project: Chipotle Headquarters
Nominee(s):
Casco Contractors
 Cheryl Osborn, President
Irvine Company
 Ben Novak, Director of Construction
Savills
 Steve Card, Executive Managing Director
Chipotle
 Brian Nichols, CEO



Project: JLL Orange County
Nominee(s):
H. Henty Associates
 Todd Shumaker, Senior Designer
 Jennifer Bartelt, Project Director
 Heidi Henty, Principal



Project: Calo Kitchen & Tequila
Nominee(s):
Coastal Pacific Construction
 Gary Mason, CEO/President
 Dave Ehlow, Senior Project Manager
 Jaclyn Mason, Director of Marketing
VANROOY Design
 Christine van Rooy, Principal
T.S. Voelker Architecture
 Todd Voelker, Principal



Project: Traffik
Nominee(s):
LPA Inc.
 Richard D'Amato, Design Director, Interiors
Traffik
 Anthony Trimino, Chief Executive Officer
Bogart Construction
 Todd McConnell, Senior Project Manager
tk1sc
 Ken Paige, Senior Associate

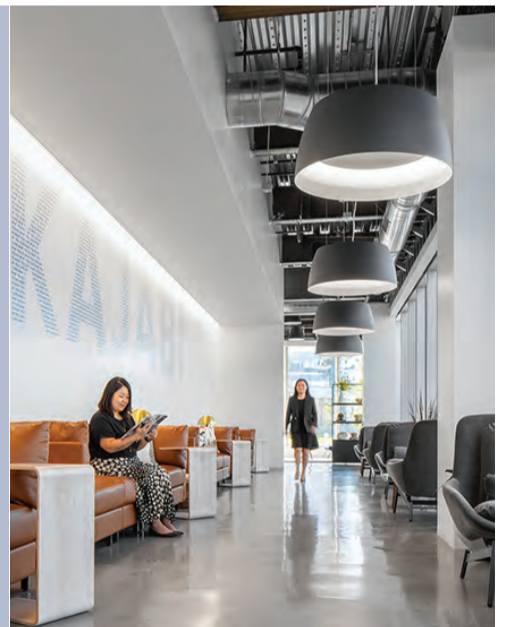
Project: FivePoint Corporate Office
Nominee(s):
Gensler
 James Young, Principal,
 Co-Managing Director
FivePoint
 Carla Fansmith, VP Asset Management
KPRS Construction
 Rob Kaneko, Project Manager
Taber Company, Inc.
 Brian Taber, President
tk1sc
 Pinky Francisco, Electrical Engineer/POC
POC Office Fronts
 Nicholas Simmons, Project Manager



Project: Financial Partners Credit Union
 Mission Viejo
Nominee(s):
Spaces Planning & Design, Inc.
 Tricia Pilkerton, Vice President
Financial Partners Credit Union
 Wanda Williams, Sr. VP,
 Chief Administrative Officer
Tama Construction, Inc.
 Clyde Tamanaha, Owner



Project: Kajabi
Nominee(s):
LPA Inc.
 Jeanie Kim, Managing Director, Interiors
Irvine Company
 J.D. Hardin, Director, Construction
 Mike Santley, Senior Leasing Director
 Gavin Gale, Leasing Director
Kajabi
 Jonathan Cronstedt, President and Co-Founder
 Kenny Rueter, CEO and Co-Founder
Howard Building Company
 Adam Herig, Project Executive
 Kaz Mulcahy, Senior Project Manager



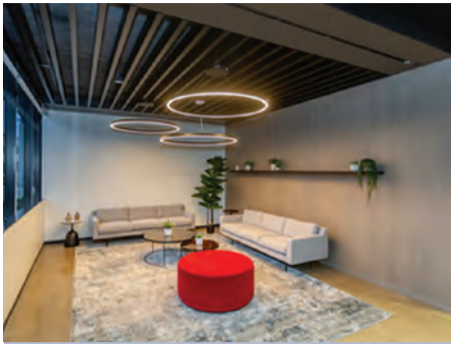
Project: Nogin Corporate Headquarters
Nominee(s):
H. Henty Associates
 Susan Dwyer,
 Principal + Corporate Studio Director
 Sara McClung, Senior Designer

Project: Biggs Cardosa Associates, Inc.
Nominee(s):
Spaces Planning & Design, Inc.
 Randall Patrick, Principal
Biggs Cardosa Associates, Inc.
 Eric Pheifer, Associate
Esplanade Builders
 Tim Imber, Senior Project Manager
Madison Marquette Real Estate Services, Inc.
 Cindy Erwin, Vice President, Construction



Project: Lido Cancer Center Infusion and Clinic
Nominee(s):
Boulder Associates
 Kate Galpin, Principal

TENANT IMPROVEMENT NOMINEES



Project: Financial Partners Credit Union
Costa Mesa
Nominee(s):
RAM Construction
Spencer Moran, Principal
Matt Renault, Principal



Project: Epsilon
Nominee(s):
Howard Building Corporation
Ryan Fraser, Senior Project Manager
Wolcott
Jenniffer Haberlin, Architect
Lincoln Property Company
Felix Metoyer, Senior Project Manager
AdamsCM
Kim Adams, Owner

LEASE NOMINEES



Project: Lakeshore / Life Time
Nominee(s):
Cushman & Wakefield
Robert Lambert, Executive Director
Rick Kaplan, Vice Chairman
Greg Brown, Executive Director



Project: Spectrum Terrace
Nominee(s):
Irvine Company Office Properties
Jeff Shaw, Senior Leasing Director
Savills
Michael Props, Senior Managing Director
CoStar Group
Nadia O'Dea, Senior Director, Corporate Real Estate & Facilities

Project: Worthe Hanson Worthe
Nominee(s):
Spaces Planning & Design, Inc.
Randall Patrick, Principal
Worthe Hanson Worthe
Todd Worthe, Principal
Coastline Development, Inc.
Jeff Bochesa, Project Manager
Madison Marquette Real Estate Services, Inc.
Cindy Erwin, Vice President, Construction



2021 MVP SERVICE PROVIDER



CHRISTINE TABORA
Project Manager
Cushman & Wakefield



SHAUNA SMITH
VP, National Accounts
Chicago Title

Hendy
LOOKS GREAT. WORKS GREAT.

Hendy's New Generation Space services are tailored to meet the demand of today's hybrid workforce. These workplaces drive employee engagement, innovation, and become a physical manifestation of an organization's brand and culture. A place that connects the human side of an organization – a place where people want to be.

THANK YOU TO JLL AND NOGIN FOR SELECTING HENDY.

WE TRULY APPRECIATE THE OPPORTUNITY TO PARTNER WITH YOUR TEAM IN THE DEVELOPMENT OF YOUR NEW GENERATION SPACE WORK ENVIRONMENT.



SPACE

PHILANTHROPY NOMINEES



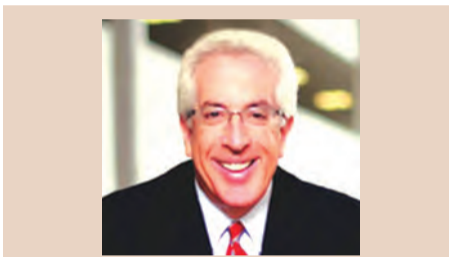
Group Nominee:
Oltmans Construction Co.
 Joseph Oltmans II, Chairman Emeritus
 Jim Woodside, Former Vice President (Retiree)
 Zachary Singerman, Project Manager
 Jeff Rich, Superintendent

Orange County Rescue Mission
 Jim Palmer, President
Charity:
 Orange County Rescue Mission's Tustin Veterans Outpost Expansion Project

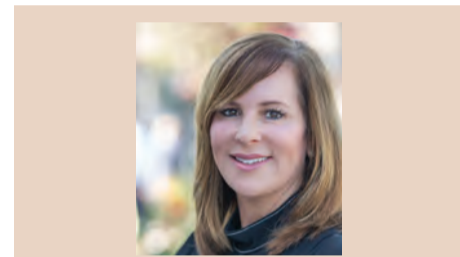


Group Nominee:
CASCO Contractors
 Cheryl Osborn, President
 Terryl Nirtaut, Director of HR
 Jessica Moeller, Chief Accounting Officer
 Justin Park, COO
 Lisa Luttrell, Director of Interiors

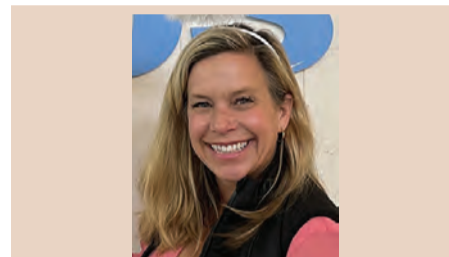
Shannon Benson, Office Manager
Charities:
 Make A Wish OC; Families Forward; McKenna Claire Foundation; Colette's Children's Home; Laura's House; Girls Inc. OC; Habitat for Humanity; The Red Cross, and more



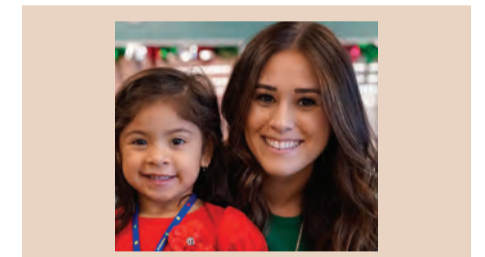
Nominee:
 Perry Schonfeld, Principal, Chief Operating Officer
 LBA Realty
Charities:
 Pediatric Cancer Research Foundation; Boys and Girls Club of America; Second Harvest Food Bank; Working Wardrobes; Operation Blankets of Love; and more



Nominee:
 Serena Benson, President, Owner
 Southern California Real Estate Services
Charity:
 Mission Hospital and Mission Hospital Valiant Women



Nominee:
 Kristina Lewison, Senior Director, Asset Management
 Invesco
Charities:
 Miracles for Kids; Project Access; Lions Heart



Nominee:
 Melissa Ley, Vice President
 CBRE Capital Markets
Charities:
 KidWorks

RENOVATION



Project: Old Ranch Country Club Revitalization
Nominee(s):
Oltmans Construction Co.
 Jack Miller, Senior Director, Special Projects Division
Club Corp
 Tom Devlin, Senior Vice President
Delawie
 Adel Smith-Chapman, Director of Interiors



Project: Crown Valley Renovation
Nominee(s):
Coastal Pacific Construction
 Gary Mason, CEO/President
 Dave Ehlow, Senior Project Manager
Robinson Hill Architecture
 Michael Robinson, Principal
Buie Stoddard
 Bob Montgomery, Vice President

Group Nominee:
 Brett DePue, Business Development Manager
 MasterCare Protection and Cleaning
 Georgette Taylor, General Manager
 LBA Realty
Charities:
 BOMA Orange County Philanthropy Committee



Group Nominee:
CapRock Partners
 Pat Daniels, CEO
 Nicholas Ilagan, SVP, Asset Management
Charity:
 Free Wheelchair Mission, Building Block Foundation Fund, OC Rescue Mission, Big Brothers/Big Sisters, FosterAll, HomeWord, IJM, and more



Nominee:
 Jeff Roos, Regional President
 Lennar
Charities:
 Samueli Academy Charter School, Student Dorms and Dhont Community Center; Diaper Drive, City of Hope, and more



Project: The Pegasus School - New Science & Technology Center
Nominee(s):
Oltmans Construction Co.
 Anjana Bhowmik, Senior Director, Production
Perkins Eastman
 Diego Matzkin, Principal
Westling & Associates Construction Management
 Josh Westling, President, Owner's Representative
Stantec
 Kevan McLaughlan, Project Manager
The Pegasus School
 Jason Lopez, Head of School



Nominee:
 Michael Nicolai, President
 Triton Air
Charities:
 Boys & Girls Club of the South County Area, CHOC Children's, Family Assistance Ministries (Hunger & Homeless Prevention), National Breast Cancer Foundation, and more

NEW CONSTRUCTION/DEVELOPMENT NOMINEES



Project: JW Marriott Anaheim Resort
Nominee(s):
Prospera Hotels, Inc.
 Ajesh Patel, CEO & President
O'Connell Hotels & Hospitality
 William O'Connell, CEO



Project: Our Lady of La Vang
Nominee(s):
Gray West Construction Inc.
 Anna Zhang, Senior Project Manager
 John Thome, Vice President, A&E / Preconstruction
 Tim Butz, Site Manager
 Eric Clara, Estimator
 Paul Buster, Superintendent



Project: Be Well Orange Campus
Nominee(s):
Boulder Associates
 Darci Hernandez, Principal
Be Well OC
 Marshall Moncrief, CEO
Snyder Langston
 Chad Divine, Project Manager
 Jo-E Lopez, Vice President
 Business Development



Project: Edwards Lifesciences Campus Expansion
Nominee(s):
Edwards Lifesciences
 Tom Porter, Vice President, Corporate Services

Project: The Harbour at Orange Coast College
Nominee(s):
Servitas
 Angel Rivera, Senior VP of Development Services
HPI Architecture
 Ammar Sarsam, Principal
 Michaela McClelland, Senior Associate
Moss & Associates
 Dale Rowton, Superintendent
 Shane Arnold, Project Manager
MHP, Inc. Structural Engineers
 Rick Beall, Principal
 James Kramer, Associate Principal
Design West Engineering
 Jonathan Bianchet, Project Manager



Project: El Verano Apartments
Nominee(s):
Innovative Housing Opportunities
 Rochelle Mills, President & CEO
City of Anaheim
 Grace Stepter, Acting Executive Director
 Andy Nogal, Senior Project Manager
 Stephen Faessel, Mayor Pro-Tem
Kingdom Development



Project: The Westin Anaheim Resort
Nominee(s):
Wincome Hospitality
 Paul Sanford, CEO
Wincome USA
 Kenneth Cheung, Director of Construction
 Larry Chu, Director of Engineering
 Judy Wang, Director of Purchasing
 Joshua Reitz, Development Manager
HED
 Otis Odell, Principal, National Housing + Mixed-Use Sector Leader
Michael Hong Architects
 Mike Hong, Design Principal
KCS West
 Elmond Wan, President & CEO

We build spaces for your needs today and tomorrow.

At KPRS, we do more than build interiors—we create inspirational spaces around their purpose and possibilities. From high-rise offices to creative campuses, we execute with a precision and efficiency that returns you to work more quickly and helps you stay flexible for an uncertain future. Build with us and work at the speed of our changing times.

Let's build together.



SALES NOMINEES



Project: Joule La Floresta
Nominee(s):
Nuveen Real Estate
 Brian Eby, Managing Director
 Nikita Rao, Managing Director
 Shilp Shah, Director
 Becky Dunne, Associate
 Justin Felix, Analyst



Project: Glen Bell Way
Nominee(s):
Newmark Knight Frank
 Kevin Shannon, Co-Head, U.S. Capital Markets
 Paul Jones, Executive Managing Director
 Brunson Howard, Executive Managing Director
 Ken White, Executive Managing Director
 Brandon White, Director



Project: City Tower
Nominee(s):
Newmark Knight Frank
 Kevin Shannon, Co-Head, U.S. Capital Markets
 Paul Jones, Executive Managing Director
 Brunson Howard, Executive Managing Director
 Ken White, Executive Managing Director
 Brandon White, Director



Project: 515 E Dyer Rd
Nominee(s):
Cushman & Wakefield
 Jeff Chiate, Vice Chairman
 John Griffin, Executive Managing Director
 Jeffrey Cole, Vice Chairman
 Max Wang, Senior Associate
 Mike Adey, Director



Project: Balboa Fun Zone
Nominee(s):
Cushman & Wakefield
 Joseph Lising, Managing Director, Capital Markets
 Lars Platt, Executive Managing Director
 Matthew Godman, Associate
 Bob Thagard, Executive Managing Director

2021 Emerging Leader



ISABELLA ZELINGER
 Advisor
 Cresa



GEORGIA KOUROS
 Analyst
 Berkadia



CASSIDY WHEELER
 Analyst, Office Sector
 Nuveen Real Estate



EMMA KELLEY
 Real Estate Impact Investing Analyst
 Nuveen Real Estate



MAKENNA PETER
 Analyst
 JLL



AMANDA DONSON
 Associate
 Allen Matkins



VICTORIA TAO
 Property Manager
 JLL



EMILY POLLARD
 Director, Marketing & Communications
 BKM Capital Partners



COURTNEY SMITH
 Senior Project Manager
 Newcastle Partners



ADIE JESSUP
 Associate
 Cushman & Wakefield

UPRITE CONSTRUCTION

First California Bus Fleet
to be all Electric constructed
by Uprite Construction Corporation



Design Builder of the Claudina Street Electric Bus Charging Facility for Anaheim Transportation Network

- 46 All Battery Electric & Solar Charging Facility
- Estimated \$4.8M in Fuel Savings
- Charging Electric Bus Fleet for the City of Anaheim
- 545kW Solar Canopy



📍 2211 Michelson Drive, Suite 500 | Irvine, CA | 92612
 ✉ info@upriteco.com
 📞 949.877.8877

upriteco.com

Building
Your Future
In Orange County



2021 Women In Commercial Real Estate



ANYA OSTRY
Senior Vice President of
Occupier Advisory &
Transaction Services
CBRE



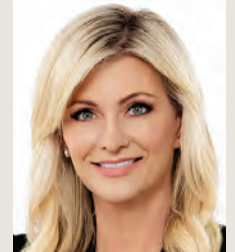
LINDA PADILLA SMYTH
President/CEO
Padilla Smyth and
Associates



LEANN LAWSON
Vice President
First American Title Company



LINDA SADEGHI
Owner/Operator/Designer
The LAB



CHERYL OSBORN
President/CEO
CASCO Contractors



ANNE BRETANA
Principal,
Co-Managing Director
Gensler



JO-E LOPEZ
Vice President, Business Development
Snyder Langston



GENEVIEVE WEST
Vice President
Howard Building Corporation



SARAH WEBB
Project Manager
Howard Building Corporation



MAGGIE MINNELLA
Administration Manager
Howard Building Corporation



ANGELA GOMEZ-JONES, RPA®
Director, West Region
Link Logistics Real Estate



SUSAN CHEEVER
Creative Manager
Howard Building Corporation



PAM SCAMARDO
Founder
TPK Properties LLC



We see dimensions others can't, from perspectives others don't.

We work in every dimension of commercial real estate. Our mission is to realize the potential in all the businesses and people we work with, so that together we can create the real estate solutions of the future.

We are driven by the entrepreneurial spirit of our people and the diverse needs of our clients. From instilling confidence in investors today, to re-imagining space requirements for tomorrow, we thrive in complex and ever-changing environments.

Kurt Strasmann
Executive Managing Director
Orange County & Inland Empire Region
kurt.strasmann@cbre.com

Learn more at cbre.com/orangecounty



KOREN HWANG
Manager of Asset Design
BKM Capital Partners



CAROLINE KASE
Director, Property Management
BKM Capital Partners



SUSAN ROUNDS
Managing Director, Operations
BKM Capital Partners



AMI BARRETT
Senior General Manager
Jones Lang LaSalle



Discover why CREW Orange County is a valuable organization for your career!

Commercial Real Estate Women ("CREW") Orange County is a professional organization that provides its members with a network to strengthen and extend business relationships and form valuable personal contacts.

- » Exclusive access to programs and leadership trainings, including CREW Network's Leadership Certificate Program.
- » Exclusive access to CREWbiz, an online business networking tool with a base of nearly 12,000 qualified CRE professionals globally.
- » Access to hundreds of industry job postings through CREW Network's Career Center.
- » Exclusive access and invitations to member-only events.
- » Reduced pricing for CREW Orange County events, industry events and CREW Network programs and convention.



Announcements

New Member Offer: Sign up now for 2022 and get the balance of 2021 free!
Get to Know CREW: Sessions available the 2nd Tuesday of each month

2021 Annual Sponsors

PLATINUM



GOLD



SILVER



Annual Network Partner	[CLIC]
Affiliate	AAA Roofing Automated Controls Behr BluSky CCS Great Scott Tree Care Office Furniture Group
Bronze	NV5

Learn more CREWOrangeCounty.org