

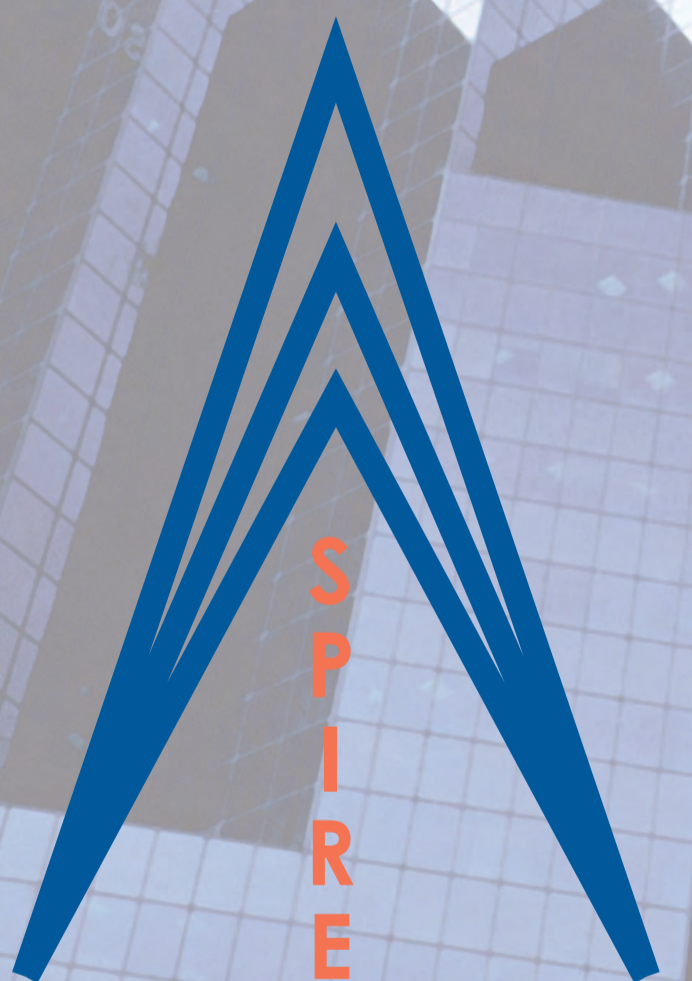


*Presents the Fifth Annual*

# SPIRE Awards

## HONORING

### Superior Performance In Real Estate



**CRE AWARD**  
**ORANGE COUNTY**

## Commercial Real Estate Awards

**March 10, 2016**

### THE CENTER CLUB

*650 Town Center Drive, Costa Mesa, California*  
5:30 pm - 8:30 pm



Master of Ceremonies  
**Perry Schonfeld**  
*Principal & COO*  
LBA



Keynote Speaker  
**Brandon R. Birtcher**  
*CEO*  
Goodman Birtcher  
North America



Keynote Speaker  
**Brooke Birtcher Gustafson**  
*Vice President,*  
*Development Operations*  
Goodman Birtcher  
North America

#### Premier Sponsors



#### Grand Sponsors



#### Distinguished Sponsors



#### Supporting Sponsors



#### Media Sponsors





**Coastline Development** is a contractor with a reputation for quality, competitiveness, financial strength and ethical business practices. We have serviced our clients for 30 years, focusing on expanding efforts in the tenant improvement and new construction market. We take pride in our accumulative record of successful project completion, on time scheduling and within budget. Contact Us At:

Coastline Development, Inc.  
714.265.0250 F: 714.265.1701 • www.coastlinedevelopment.com



30 Years in Business



## CREW-OC Board Members 2016



**Francesca Braniger**  
President/National Delegate  
Sunwest Bank



**Karen Flanigan**  
President Elect/National Delegate  
Greenlaw Management



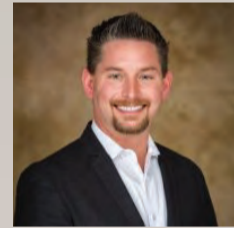
**Angela Kralovec**  
Past President  
BlackRock



**Kristen Croxton**  
Treasurer  
Capital One Multifamily Finance



**Jennifer Bojorquez**  
Secretary  
Troutman Sanders LLP



**Josh Mons**  
Director - Membership  
Squar Milner LLP



**Diane Fiorelli**  
Director - Sponsorship  
Langan Engineering & Environmental Services, Inc.



**Eileen Doody**  
Director - Programs  
PM Realty Group, LP



**Karen Torres**  
Co-Chair - Programs  
Hoag Hospital



**Jennifer Quader**  
PR, Marketing, Communications  
Brower, Miller & Cole



# 5th Annual SPIRE Awards



CREW OC is happy to present the judges list for the 5th Annual SPIRE Awards!

### JUDGES

Wayne Pinnell, Managing Partner, Haskell & White, LLP

Kim Graham, Managing Director, Gensler

Rand Sperry, CEO, Sperry Commercial, Sperry Equities

Melanie Colbert, SVP Operations, LBA Realty

Elise Luckham, Vice President, Director of Real Estate, First American

Brenna Walraven, Founder and CEO, Corporate Sustainability

Mark Mueller, Senior Reporter and Editor, OCBJ

Jim Korona, Principal, Jake Enterprises

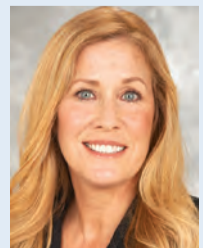
Camilla Mimi Kuo, Partner, Cox, Castle & Nicholson

Kevin Jennings, SVP, Commercial Real Estate Banking  
Global Commercial Banking, Bank of America Merrill Lynch

## CREW-OC SPIRE Co-Chairs



**Karen Eddy**



**Catherine Falco**



# bar raising

Bank of America Merrill Lynch is proud to join in honoring the outstanding efforts of CREW-OC Spire Award Nominees.

Visit [bofaml.com](http://bofaml.com)

**Bank of America**  
**Merrill Lynch**



**Bank of America**  
**Merrill Lynch**

The power of global connections™

"Bank of America Merrill Lynch" is the marketing name for the global banking and global markets businesses of Bank of America Corporation. Lending, derivatives, and other commercial banking activities are performed globally by banking affiliates of Bank of America Corporation, including Bank of America, N.A., Member FDIC. Securities, strategic advisory, and other investment banking activities are performed globally by investment banking affiliates of Bank of America Corporation ("Investment Banking Affiliates"), including, in the United States, Merrill Lynch, Pierce, Fenner & Smith Incorporated and Merrill Lynch Professional Clearing Corp., both of which are registered broker-dealers and Members of SIPC, and, in other jurisdictions, by locally registered entities. Merrill Lynch, Pierce, Fenner & Smith Incorporated and Merrill Lynch Professional Clearing Corp. are registered as futures commission merchants with the CFTC and are members of the NFA. Investment products offered by Investment Banking Affiliates: Are Not FDIC Insured • May Lose Value • Are Not Bank Guaranteed. ©2016 Bank of America Corporation GCB-146-AD | ARQSWRVC

# The Power of CREW: An Orange County Business Organization with Deep Roots

Business leaders gather at the Pacific Club in Newport Beach. There are handshakes and cards exchanged, followed by an active discussion as the group interacts with an expert panel on sustainability and optimization of energy use in commercial real estate.

It's the first luncheon of the year for Commercial Real Estate Women - Orange County, an organization that provides members with a network to strengthen and extend business relationships and form valuable personal contacts.

The organization, which is a chapter of the larger, national CREW Network, celebrated its 25th Anniversary last year, and plans to continue to provide members with events and activities that strengthen and extend business relationships.

"CREW Network was established in 1989 as a support and networking tool for women in the male-dominated industry of commercial real estate," explains Francesca Braniger, a Vice President with Sunwest Bank and 2016 President of CREW-OC. "In Orange County, the strong group of women who founded our chapter saw the need for women in commercial real estate to connect on a local and national level."

Today, these connections are essential to the success of the organization, which continues to grow in membership.

"Twenty-five years after CREW-OC's inception, the number and role of women in the commercial real estate industry continues to grow," says Braniger. "Our chapter now includes approximately 170 members, and demonstrates strong growth each year."



This growth mirrors that of the national CREW Network, which continues to post strong growth across more than 70 chapters in the U.S. and Canada.

The size and strength of the national network is a major boon to local members, according to Braniger, who notes that CREW-OC members have access to professionals throughout North America - a fact that can help members to strengthen their individual career growth.

"When CREW-OC began in 1990, people were unfamiliar with CREW as a larger organization," she says. "Today, our members are able to leverage these relationships in order to strengthen and extend business relationships and form valuable personal contacts."

To nurture these contacts, CREW-OC offers an extremely strong base of events, encompassing lunch programs, a summer charity party, and various member-only events throughout the year.

The organization also conceptualized and created Orange County's only commercial real estate awards program - the SPIRE Awards - a program that will take place at The Center Club in Costa Mesa on Thursday, March 10, 2016.

"As we plan our events, we want to ensure that our members continue to benefit from the unique networking and mentorship opportunities that our organization can deliver," says Braniger. "The women and men of CREW-OC are leaders in their companies, and in Orange County, and we will continue to support them as they advance in this industry."

For more information on Commercial Real Estate Women - Orange County (CREW-OC), visit [www.crew-oc.org](http://www.crew-oc.org).

## LEE & ASSOCIATES® SALUTES THEIR 2015 TOP PRODUCERS IN ORANGE COUNTY

Lee & Associates was founded in 1979 and has since grown to over 54 offices across the United States and Canada through the simple idea that successful agents would want ownership in their office. Lee & Associates is proud to provide Orange County with superior local expertise combined with a national reach.



**GARY MCADELL**  
Office



**SEAN AHERN**  
Office / Industrial



**BRIAN GARBUTT**  
Office / Investment



**BRUCE HEATHCOTE**  
Retail



**CHUCK NOBLE**  
Industrial / Investment



**DAVE HUNSAKER**  
Industrial / Investment



**JIM SNYDER**  
Industrial / Investment



**PHIL COHEN**  
Office/Industrial



**DAVID NEWTON**  
Industrial / Office



**KEN GOULD**  
Retail / Investment



**CHRIS COYTE**  
Industrial



**ADAM WICKER**  
Office / Investment



**RYAN SWANSON**  
Industrial / Investment



**JACK HALEY**  
Industrial / Investment



**GREG DIAB**  
Industrial / Investment



LEE & ASSOCIATES - NEWPORT BEACH  
100 Bayview Circle, Suite 600  
Newport Beach, CA 92660  
T: 949.724.1000 | F: 949.862.9048

LEE & ASSOCIATES - IRVINE, INC.  
9838 Research Drive  
Irvine, CA 92618  
T: 949.727.1200 | F: 949.727.1299

LEE & ASSOCIATES - ORANGE  
1004 W. Taft, Suite 150  
Orange, CA 92865  
T: 714.647.9100 | F: 714.543.5285

# TRANSFORMING REAL ESTATE INTO REAL ADVANTAGE

*For every client, advantage is delivering the broadest, deepest reach and resources any real estate company offers.*

*Transforming property into prosperity, square feet into strong portfolios, scale into global strength. All in service of exceptional outcomes that build real business advantage. Let us put our actionable perspectives, global reach and powerful connections to work for your business.*

For more information, please contact:

Kurt Strasmann  
Senior Managing Director  
+1 714 371 9320  
+1 949 725 8660

Jeff Moore  
Senior Managing Director  
+1 949 725 8600

[cbre.com/orangecounty](http://cbre.com/orangecounty)  
 @CBRESocal

**CBRE** *Build on  
Advantage*



From L to R: Jessica Hyman; Angela Kralovec, BlackRock; Courtney Parks, Lincoln Property Company; Suzanne Skov, Daspin & Aument, LLP



From L to R: Kim Bangs, AAA Property Services; Regina Carlini, Stream Realty Partners; Arian Maher, Vestar Property Management; Kristen Quinlan, Sanders & Wohrman; Becky Rodarte, Stream Realty Partners

## CREW Mixer Pulls in More Than 100

by Carrie Rossenfeld

CREW-OC's annual mixer event at the Fairmont Hotel in Orange County provided networking opportunities for members and guests, explained the benefits of membership and introduced the chapter's 2016 board of directors. More than 100 commercial real estate professionals gathered to enjoy drinks and appetizers while learning more about the Orange County chapter of Commercial Real Estate Women, which specializes in providing its members with opportunities to strengthen and extend valuable business relationships.

"The primary purpose of this mixer is to provide networking opportunities for our members and guests," says Francesca Braniger, a VP with Sunwest Bank and the 2016 president of CREW-OC. "On a macro level, CREW has almost 10,000 members throughout North America, and nearly 200 of those members are here in Orange County. Locally, we have a strong group of men and women who work in every facet of real estate, and each member brings different to the table, which is a benefit to the entire organization."

In addition to Braniger, CREW-OC's 2016 board of directors includes:

- ▶ Karen Flanigan of Greenlaw Management Inc., president elect/national delegate
- ▶ Jennifer Bojorquez of Troutman Sanders LLP, secretary
- ▶ Kristen Croxton of Capital One, treasurer

- ▶ Josh Mons of Squar Milner, director of membership
- ▶ Eileen Doody of PM Realty Group and Karen Torres of Hoag Hospital, co-chairs of programs
- ▶ Jenn Quader of Brower, Miller & Cole, director of public relations
- ▶ Diane Fiorelli of Langan Engineering & Environmental Services, director of sponsorship
- ▶ Angela Kralovec of BlackRock, immediate past president

"Our board of directors and committee leaders have so much in store for the coming year," Braniger says. "CREW-OC will offer more than seven industry-focused luncheons, a variety of networking events at exciting venues, as well as our annual SPIRE awards event." The SPIRE awards event will be held on March 10, 2016, and GlobeSt.com has reported on these awards throughout the nomination process.

"The camaraderie at CREW-OC is so unique, and it has been a powerful influence in my professional life," adds Braniger. "I encourage anyone who is interested in taking their career to the next level to get involved, join a committee and look for leadership opportunities."

Originally published by [GlobeSt.com](http://GlobeSt.com)



## NAI Capital Congratulates Your Outstanding Success



Sonya Dopp-Grech  
Senior Vice President

**\$43,950,000 Sale**  
Centrum North Building, Orange, CA  
Class A Office/Medical Building  
179,279 SF, Represented Buyer



Christopher Arvizu  
Senior Vice President

**\$33,500,000 Sale**  
Rossmoor Manor Apartments: Los Alamitos, CA  
150 units, Represented Buyer



David Knowlton  
Senior Vice President

**\$26,700,000 Sale**  
Coast Apartments: Costa Mesa, CA  
Azure Apartments: Redondo Beach, CA  
81 Units, Represented Buyer



Tom Nguyen  
Senior Vice President

**\$15,000,000 Lease**  
520 Newport Center, Newport Beach, CA  
Wing Lung Bank U.S. headquarters  
New Class A Office Tower  
17,630 SF, Represented Tenant



To learn what our market experts can do for you,  
contact NAI Capital today.

Brian Childs  
EVP, Branch Manager

949.854.6600  
[naicapital.com](http://naicapital.com)

Transaction | Valuation | Consulting | Investment | Property Management



# Strengthen your business with the power of ours.

Your business, big or small, needs solutions that are as unique as the Orange County landscape. That's where Cox Business excels. From the Fortune 500™ to your sole proprietorship, every customer receives the same level of dedication and commitment. Our voice, data and business TV solutions are scalable, reliable, and tailored to fit your needs. And while we are local, doing business where you do business, we have the power to reach nationwide. **Cox Knows Business.**

---

Let's Talk.  
Call today to ask about our latest promotions!  
**(844) 203-0027**  
[coxbusiness.com](http://coxbusiness.com)

Services not available in all areas. Other restrictions apply. ©2016 Cox Communications, Inc. All rights reserved.





Caliber's team built out the office space to include display spaces that can showcase products like the PowerFLEX Eco swimwear made from upcycled ECONYL®.



A seating area invites staff to collaborate and informally talk without the constraints imposed by a conference table or lunchroom setting.

## Speedo's New Orange County Space

*An innovative space to create pioneering products*

It's only fitting that when a prolific swim and athletics product producer like Speedo decides to leave LA for an Orange County setting, they choose a space that allows them to create an office home as innovative as their products. Set in the Cypress' 600 acre business park, the 64,000 sq. ft. space shares the neighborhood with names like Mitsubishi and Siemens Medical Solutions. After securing the lease, it was time to cue a tenant improvements team from Caliber who is known for leading tenant improvements in multiple Cypress spaces and for giving life to brand-showcasing spaces for active lifestyle brands like Vans. Caliber's team, led by on-site Project Supervisor Aaron Moss, was able to introduce value engineering ideas that kept the move-in date on schedule and put in the unique features that help make their contemporary space even more distinctive.

### Working Great Today, Flexible for Tomorrow

Being the production home to various Speedo functional specialists, the now



refurbished Katella Avenue space started with features that gave space designers the freedom to call for workplace configurations suitable for every working style. If workplace design is at its best when end users can adjust the environment to their preferred work style and the space can be adaptable at various phases in the future, Speedo's new digs could be nearly perfect.

From kick-off, the industrial minimalist shell offered a raised access floor throughout. While raised flooring has been traditionally more common to IT data centers because it offers space for cables and mechanical systems as well as underfloor cooling, a raised floor throughout provides a service pathway for HVAC ductwork and cables for voice and power to reside below the floor. This meant that lighting, furniture and wall systems placement didn't have to be driven by the usual infrastructure restrictions and the large ceiling void space typically reserved in conventional construction could be eliminated. Higher open ceilings means more daylighting can be harvested, underfloor ventilation makes workers more comfortable and the space can be changed quickly and economically when demands shift in the years to come.

Picture the collection of workstyle options the Caliber team brought to life: collaboration clusters, private isolation shells and vast gathering areas, including one outfitted with twin 20-foot video screens ready to stream video for large groups and office gatherings. There are now floor to ceiling glass enclosed offices (many on the 18,000 square foot mezzanine level), linked office pods clustered together, and roughly 2800 square feet of open space with cubicles and open areas. The bundled office pods sprinkled throughout resemble small individual sheds with three foot openings shutable with 8 ft. x 10 ft. sliding barn doors. The translucent plastic and sheet metal paneled ceilings on each pod create a sound barrier while enabling light to be pulled in from the larger space.

**“When we discovered a spec'd product produced in Europe would mean waiting 4-6 weeks to receive it, we got to work and found an equally refined product made here. This was another instance where applying creative approaches allowed us to ensure the client could stand firm with their move-in date without compromising the details and features that make their place their own. This kind of value engineering bridges the gap between a designer's vision and what it takes to make it happen in reality.”**

- Aaron Moss, Caliber Construction

### Water Anyone?

Caliber's work continues onsite with the finalization of a 14 foot by 14 foot aboveground pool — visible from the double-story glass encased entry — where they can both demonstrate and test their products.

### What will the Fastskin LZR Racer Bring to Rio?

While the corporate move may be complete, the results expected from 24 Speedo-sponsored athletes this summer at the Rio 2016 Olympic Games are an ongoing reminder that Speedo's aquatic innovations continue to stream forth.

For more information, contact Caliber Construction Inc. at 714.255.2700, 240 North Orange Avenue, Brea, CA 92821.



At JLL, we may deal in square feet but we don't believe in boundaries. We use our experience and market knowledge to increase the value of real estate, to enhance building performance, to help companies find space that drives productivity.

Making smart real estate decisions today can shape the future of your business. Let's plan ahead, together.

+1 949 885 2900

[www.jll.com/orange-county](http://www.jll.com/orange-county)

Leasing • Management • Sales • Finance • Consulting • Outsourcing





## Real Estate Financial Reporting:

### *GAAP vs. Income Tax Basis Reporting—How to Choose the Best Method for Your Company*

The majority of real estate companies have a choice on the method they use for financial reporting: Generally Accepted Accounting Principles “GAAP” or Income Tax Basis Reporting. While each has its advantage, it can be challenging to decipher the best method for each company. The best place to start is by evaluating their differences, which include the following:

#### **Recognition of rental income:**

► GAAP requires rental income to be recognized on a straight line basis over the life of the lease. Income Tax Basis reporting would align with the cash flows outlined in the lease agreement.

#### **Depreciation method for property owned:**

► GAAP requires a method such as straight line depreciation over the life of the asset.

► Income Tax Basis reporting would likely be accelerated and align with the deductions taken in the tax return.

#### **Impairment evaluations:**

► Under GAAP, real estate must be evaluated for impairment on a regular basis, and it is possible to have a large write down of the asset.

► Under Income Tax Basis reporting, the real estate asset will be carried at historical cost, less depreciation, with no write down for any fair value impairments.

Based on these differences, here are some key considerations that may better help you decide on a method of choice:

What does your lending agreement or partnership agreement require? When forming a new entity or drafting agreements, negotiate your preferred method of financial reporting.

What is your exit strategy? If the company may be rolled up into a public REIT in the future, a history of GAAP financial reporting will be required.

GAAP financial statements can be affected by market fluctuations, for things such as impairment charges, which may

cause repercussions such as debt covenant violations.

Costs for reporting: It may save money to utilize the Income Tax Basis Reporting method, and only keep one set of books.

User Friendly: Which method will be easier for your investors to understand? While each method has its advantages, there is no “right” choice for reporting. Management should review the facts and circumstances of their particular situation and choose the best method for their situation.



The pieces of your company’s financial puzzle become more complex as you grow your business. Haskell & White provides the experience and leadership to fit those pieces together and help you achieve your goals.

THE VALUE OF EXPERIENCE

**HASKELL & WHITE** LLP  
CERTIFIED PUBLIC ACCOUNTANTS AND BUSINESS ADVISORS

ORANGE COUNTY | SAN DIEGO

949.450.6200 | [www.hwcpa.com](http://www.hwcpa.com)



**Diane Wittenberg, CPA**, is a partner with Haskell & White. She works with many real estate clients as well as other industries, providing audit and consulting services to both public and private companies.

She can be reached at 949.450.6334 or [dwittenberg@hwcpa.com](mailto:dwittenberg@hwcpa.com).

WOMEN IN CRE NOMINEES



**Susan Stoneburner, President**  
*Pacific Design Directions, Inc.*



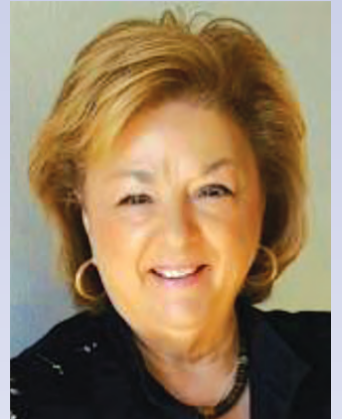
**Lori Torres, Founder/CEO**  
*Parcel Pending*



**Laura Archuleta, President**  
*Jamboree Housing Corporation*



**Carol Springstead, President**  
*Springstead & Associates*



**Elisa Stipkovich, Consultant**  
*IHO*



**Adele Green, Senior Vice President/Field Specialist**  
*Bank of America*



**Donna Kelly, Vice President of Community Planning**  
*Lennar*



**Becky Sullivan, Vice President, Development & Construction**  
*DJM Capital Partners, Inc.*



**Cheryl Osborn, President/Founder**  
*Casco Contractors*



Festival of Arts

**KPRS Construction:** Building the future with our clients.  
KPRS congratulates the Festival of Arts on their CREW SPIRE Awards nomination.

Learn more about what we can do for you at [www.kprsinc.com](http://www.kprsinc.com).



# AT DAUM, IT'S NEVER LONELY AT THE TOP



DAUM's team of experienced professionals ride in front of the pack. If you want to move faster, close more deals, keep more of what you make and have more fun doing it, then join us at the top.

From May 6 - May 10, our 2015 President's Club producers and their significant others will be celebrating together at the Fairmont Kea Lani on Maui, courtesy of DAUM.

## CONGRATS TO DAUM'S 2015 PRESIDENT'S CLUB



**#1 RICK JOHN**  
Inland Empire  
DAUM #1 Top Producer



**STEVE CRANE**  
Orange County  
DAUM #2 Top Producer



**CHRIS MIGLIORI**  
Orange County  
DAUM #3 Top Producer



**GUS ANDROS**  
Inland Empire  
DAUM #4 Top Producer



**MICHAEL BARREIRO**  
Orange County  
DAUM #5 Top Producer



**DAVID FREITAG**  
Los Angeles



**JERRY SACKLER**  
Los Angeles



**MICHAEL WALSH**  
Ventura County



**MIKE FOXWORTHY SR.**  
Ventura County



**CASEY MUNGO**  
South Bay



**MAURY PANZA**  
Orange County



**DAVID WILSON**  
Phoenix



**GIANNI VITALE**  
Woodland Hills



**DORAN TAIKEF**  
Los Angeles



**CHRIS SULLIVAN**  
Woodland Hills



**GAVIN DENNISTON**  
Orange County



**ROBERT DIPRE**  
Industry



**GEORGE FALES**  
Ventura County



**ERIC BURNEY**  
Inland Empire



**SHAN LEE**  
Industry



**DENNIS SANDOVAL**  
Industry



**STEVE BODEMAN**  
Inland Empire



**ANDREW CLARK**  
Industry



**PAUL GINGRICH**  
Orange County



**RON BERNOT**  
Valencia



**KEVIN TAMURA**  
Woodland Hills



**PATTI KUTSCHKO**  
Valencia



**BRIAN DONER**  
Orange County



**CHARLES JOHNSON II**  
Industry

Ride with us. 888.659.DAUM



COMMERCIAL REAL ESTATE SERVICES

Los Angeles | San Fernando Valley | Santa Clarita Valley | San Gabriel Valley | South Bay | Mid-Counties  
Orange County | Inland Empire | Ventura & Santa Barbara Counties | Phoenix, AZ

**LEASING NOMINEES**



**Project: MicroVention Headquarters**  
**Nominee(s):**  
**Savills Studley**  
 Jeff Cannon, Senior Managing Director



**Project: Nobu at Lido Marina Village**  
**Nominee(s):**  
**DJM Capital Partners, Inc.**  
 Lindsay Parton, President  
 Heather Hollister, Senior Vice President Retail Leasing  
 Stenn Parton, Director of Leasing



**Project: Ricoh Electronics - 1123 Warner, Tustin**  
**Nominee(s):**  
**Cushman & Wakefield**  
 Jeff Chiante, Executive Director  
 Rick Ellison, Executive Director



**Project: Goodwill Industries Lease, NGKF**  
**Nominee(s):**  
**Newmark Grubb Knight Frank**  
 Justin Hodgdon, Senior Managing Director  
 Wesley Hunnicutt, Senior Managing Director  
 Matthew Moore, Senior Managing Director  
 Drew Netherton, Senior Managing Director  
 Joel Smith, Associate Director

**Project: Wells Fargo N.A.**  
**Nominee(s):**  
**ORION Property Partners, Inc.**  
 Jay Carnahan, President  
 Ali Hawthorne, Associate  
 Mark McAdams, Principal



**Project: Mazda North America Operations**  
**Nominee(s):**  
**Cushman & Wakefield**  
 Chon Kantikovit, Senior Director  
 Rick Kaplan, Vice Chairman  
**Mazda USA**  
 Rumi Walsh, Facilities & Administrative Manager



**FOR LEASE**

LAST REMAINING SPACE AT  
**4450 MACARTHUR BOULEVARD**  
 NEWPORT BEACH, CA



**4,195 RSF | GROUND FLOOR**

- New building adjacent to the Fairmont Hotel
- Prominent MacArthur Boulevard frontage
- Next to the Pacific Club and nearby food court
- Highly visible Newport Beach location
- Above standard ceiling height (11 feet) and abundant glassline
- Subterranean and surface parking; showers and lockers

For Leasing Information, Please Contact:  
**Dean Chandler**  
 Lic. 00833627  
 +1 949 725 8515  
 dean.chandler@cbre.com



**Project: Jackson, DeMarco, Tidus & Peckenpaugh**  
**Nominee(s):**  
**ORION Property Partners, Inc.**  
 Jay Carnahan, Managing Partner  
 Ali Hawthorne, Associate  
 Mark McAdams, Principal



**Project: Action Property Management**  
**Nominee(s):**  
**Corporate Realty Advisors**  
 Jeff Tabor, CEO/President



**Project: Nations Direct Mortgage**  
**Nominee(s):**  
**Corporate Realty Advisors**  
 Jeff Tabor, CEO/President

LEASING NOMINEES



**Project:** i-5 Publishing, LLC  
**Nominee(s):**  
**ORION Property Partners, Inc.**  
Jay Carnahan, Managing Partner  
Ali Hawthorne, Associate  
Mark McAdams, Principal



**Project:** Bankruptcy Management Solutions  
**Nominee(s):**  
**Corporate Realty Advisors**  
Jeff Tabor, CEO/President



**Project:** LBA RV Company I LLC 5  
**Nominee(s):**  
**CBRE**  
Carol Trapani, 1st Vice President  
Allison Schneider, Vice President  
Rachel Pourcho, Client Services Specialist  
Jake Stickel, Senior Vice President  
Kevin Calihan, Senior Vice President



**Project:** Quality Systems Inc. Lakeshore Towers  
**Nominee(s):**  
**CBRE**  
Rick Sherburne, Executive Vice President  
Alex Hayden, Executive Vice President  
Travis Boyd, Executive Vice President



**Project:** Western Growers Association  
**Nominee(s):**  
**Newmark Grubb Knight Frank**  
Gary Allen, Senior Managing Director  
**Western Growers**  
Tom Nassif, President/CEO



**Project:** Village at La Floresta  
**Nominee(s):**  
**CBRE**  
Barclay Harty, 1st Vice President



**Project:** IXI Technologies  
**Nominee(s):**  
**Hughes Marino, Inc.**  
Jeff Shepard, Senior Vice President  
JP Roach, Vice President



**Project:** Hyundai Capital America  
**Nominee(s):**  
**Cushman & Wakefield**  
Don Yahn, Senior Director

# unparalleled

ən.pə.rəˈleɪd / adjective

1. having no parallel or equal

synonyms: exceptional, unique, without parallel, unequalled, unprecedented, without equal, unrivaled, second-to-none, unsurpassed, incomparable



Caliber Construction Inc.  
240 North Orange Avenue | Brea CA 92821  
714-255-2700 | sales@caliberconstructioninc.com  
caliberconstructioninc.com

**Caliber**  
CONSTRUCTION, INC.

**LENDING NOMINEES**



**Loan:** Quintana Office Complex, Irvine, CA  
**Nominee(s):**  
**New York Life Real Estate Investors**  
 Kirk Kniss, Senior Director  
 John Lippmann, Senior Director  
**Hines**  
 Ray Lawler, Managing Director  
 Drew Huffmann, Associate  
**HFF**  
 Kevin MacKenzie, Senior Managing Director  
 Lee Redmond, Real Estate Analyst



**Loan:** Burnham San Clemente  
**Nominee(s):**  
**Bank of America Merrill Lynch**  
 Dean Parsons, Senior Vice President  
 Shane Kunimura, Client Manager  
 Teresa (Teri) H. Brown, Senior Vice President  
 Paul S. Kim, Vice President  
 Mary Shiratori, Assistant Vice President  
 Kathleen A. Medeiros, Vice President  
 Margarita L. Flores, Vice President



**Loan:** Sares Regis Vireo at Park Place  
**Nominee(s):**  
**Bank of America Merrill Lynch**  
 Shane Kunimura, Senior Vice President  
 Annie Pedron, Senior Vice President  
 Paul S. Kim, Vice President  
 Marilyn R. Smith, Vice President  
 Margarita L. Flores, Vice President



**Loan:** Lincoln Ave Apartments  
**Nominee(s):**  
**Bank of America Merrill Lynch**  
 Maria Joyce, Senior Vice President  
 Stephanie Oliveras, Senior Vice President  
 Ileana Elmasyan, Assistant Vice President  
 Eva Salcedo, Vice President  
 Casey M. Carpenter, Vice President

**Loan:** Bella Terra  
**Nominee(s):**  
**Prudential Real Estate Investors**  
 Nevena Vujic, Vice President



**Loan:** Sendero Marketplace Loan  
**Nominee(s):**  
**MUFG Union Bank**  
 Brian Brown, Vice President



**CONGRATULATIONS SPIRE AWARD NOMINEES**

**CRAIG REALTY GROUP**  
 craigrealtygroup.com

EMPOWERING WOMEN IN COMMERCIAL REAL ESTATE FOR 30 YEARS

**CITADEL OUTLETS**  
 LA'S CHOICE FOR OUTLET SHOPPING

**OUTLETS at San Clemente**  
 OPENING FALL 2015



# OUR 2015 TOP PRODUCERS.

Newmark Grubb Knight Frank would like to recognize our Top Producers in Orange County.

TOP PRODUCER



Wes Hunnicutt



Gary Allen



Robert Griffith



Justin Hodgdon



Garth Hogan



Doug Mathews



Jack McNutt



Matt Moore



Drew Netherton



Scott Read



John Scruggs



Steve Sprenger

**Newmark Grubb  
Knight Frank**

For further information, please contact:  
**Greg May, Executive Vice President, Regional Managing Director**  
4675 MacArthur Court, Suite 1600, Newport Beach, CA 92660 • 949.680.2000

NEW CONSTRUCTION NOMINEES



**Project: Mount of Olives Children's Ministry Building**  
**Nominee(s):**  
**Mount of Olives Church**  
Dave Scott, Manager  
**Erickson Hall Construction, Inc.**  
Jim Fisher, Project Manager



**Project: Crean Lutheran High School Athletic Complex**  
**Nominee(s):**  
**Crean Lutheran High School**  
Brian Underwood, Executive Director  
**Terrain Integration, Inc.**  
Stephanie Shermoen, President/  
Landscape Architect  
**Mark Bogh Contractor**  
Mark Bogh, President



**Project: Courtyard Anaheim Theme Park Entrance**  
**Nominee(s):**  
**R.D. Olson Construction**  
Joseph Cervantes, Senior Vice President of Operations  
Steve Toal, Project Manager  
Brian Knight, Project Engineer



**Project: Apex Laguna Niguel Nominee(s):**  
**Mill Creek Residential**  
Samuel Simone, Senior Managing Director



**Project: Centerpointe Apartment Homes**  
**Nominee(s):**  
**Irvine Company Apartment Communities**  
JD Shafer, Senior Director, Community Management



**Project: Boardwalk by Windsor Nominee(s):**  
**TCA Architects**  
Melissa Logan, Director of Marketing



**Project: Outlets at San Clemente Nominee(s):**  
**Craig Realty Group**  
Steve Craig, CEO



**Project: Pacific City Nominee(s):**  
**DJM Capital Partners, Inc.**  
Becky Sullivan, Vice President, Construction & Development

**Relax,**  
**we've got you**  
*and your parking lot*  
**covered.**

**UNITED PAVING CO.**  
Asphalt - Concrete - Striping  
Tel 714-739-2200  
INFO@UNITED-PAVING.COM

Lic. 865828

**NEW CONSTRUCTION NOMINEES**



**Project: 200 Spectrum Center Drive  
Nominee(s):**

**Irvine Company**

Roger DeWames, Vice President, Development  
Churchil Bunn, Director Development  
Tim Carey, Vice President Project/Construction Management  
Jeffrey Shaw, Senior Director Leasing  
Holly McManus, Vice President Operations  
Kandy DeYoung, Director, Operations  
Ashley Trexler, Manager, Operations  
Rick Christensen, Senior Chief Engineer  
Jeff Perkins, Chief Engineer  
Jason Knudson, Senior Director/Project Manager

**BCM Consulting**

David Byrd, Principal

**Pei Cobb Freed**

Michael Bischoff, AIA, LEED Architect  
Michael Lyon, Architect

**LPA Architects**

Denise Mendelssohn, Architect/Project Manager

**Hathaway Dinwiddie**

John Cowles, Vice President  
Eric Matthews, Superintendent  
Jose Iniguez, Senior Project Manager

**Burton Landscape Architecture Studio**

Bill Burton, President  
Roger Wilcox, Project Manager  
Matthew MacLeod, Superintendent

**Project: Marina Park  
Nominee(s):  
KPRS Construction  
Services, Inc.**

Bob Berenguer,  
Senior Project Manager  
**City of Newport Beach**  
Dave Webb, Public Works  
Director

**Rabben Herman Design**

Dan Herman, Principal  
Tom Jewell, Lead Architect

**Bundy-Finkel Architects**

Timothy Bundy, Principal  
Richard Finkel, Principal  
Mike Weyrich, Lead  
Architect



**Project: The Patio Café at Airport Tower  
Nominee(s):**

**The Muller Company**

Meghan Froeberg, Property Manager  
Jenny Blanchart, Director of Property  
Management  
Sue Donahugh, Director of Tenant &  
Capital Improvements  
Jim Bannan, Director of Leasing &  
Marketing  
Rich Fragapane, Vice President  
Development & Construction

**K2 General Contractors, Inc.**

Kris Thordarson, President

**CDL Associates, Inc.**

Carolyn Doyle, President

**H.Hendy Associates**

Monica Walker, CID LEED AP ID+C

**Nadel Architects**

David Jacobson, Executive Vice  
President/Project Director



Western Digital  
DRIVE Wellness Center

**COASTAL PACIFIC  
CONSTRUCTION**

28 Edelman, Irvine, CA 92618  
(949) 770-1555

www.coastalpacificconstruction.com

*SPiRE Award Nominee  
Best Tenant Improvement*

**TEN-X CONGRATULATES  
THE SPIRE AWARD  
WINNERS AND NOMINEES**



Learn more at [ten-x.com](http://ten-x.com)



Unmatched Access | Deeper Insight | Superior Execution



**Newmark Grubb  
Knight Frank**

**ACHIEVING  
GREATNESS.**

Newmark Grubb Knight Frank is proud to be a Distinguished Sponsor of the 5th Annual SPIRE Awards and we congratulate our fellow nominees and winners.

For information please contact:  
**Greg May, Executive Vice President, Regional Managing Director**  
 4675 MacArthur Court, Suite 1600, Newport Beach, CA 92660 949.608.2000 [www.ngkf.com](http://www.ngkf.com)

North America • Latin America • Europe • Asia-Pacific • Africa • Middle East

**TENANT IMPROVEMENT NOMINEES**



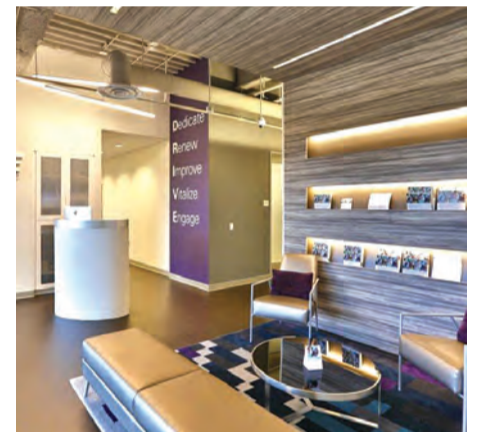
**Project: MemorialCare Health System**  
**Nominee(s):**  
**MemorialCare Health System**  
 Tammie McMann Brailsford,  
 Chief Operating Officer



**Project: Ola Mexican Kitchen**  
**Nominee(s):**  
**Ola Mexican Kitchen**  
 Anthony Andrews, Owner



**Project: Asics North American Headquarters**  
**Nominee(s):**  
**Dennis Potts Project Management**  
 Dennis Potts, President



**Project: DRIVE Wellness Center at Western Digital**  
**Nominee(s):**  
**Coastal Pacific Construction, Inc.**  
 Gary Mason, CEO/President  
 Kevin Eddy, Director of Project Management



First we listen — then we deliver.  
 Thank you, Too Faced Cosmetics.  
 Thank you, Bixby Land Company.  
 Thank you, CREW.

**OUR** SPIRE nomination for interiors reflects Too Faced's vision and Bixby's great project as much as our construction.




101 Shipyard Way, Suite A | Newport Beach, CA 92663  
 949-723-0147 | [www.dbacinc.com](http://www.dbacinc.com) | Lic #637651



**Project: Too Faced Cosmetics at gen2**  
**Nominee(s):**  
**Bixby Land Company**  
**Gensler**  
 Kim Graham, Principal, Managing Director  
 Kirstie Acevedo, Senior Associate  
**DBaC**  
 John Curci, President  
**Too Faced Cosmetics**  
 Jerrod Blandino, Co-Founder/Creative Director  
 Jeremy Johnson, Co-Founder/CEO



**Project: Fiat Chrysler Automobiles**  
**Nominee(s):**  
**Ware Malcomb**  
 Ted Heisler, Principal, Interior Architecture and Design  
**Fiat Chrysler Automobiles**  
 Jeff Eschenbach, Director – California BC  
**CBRE**  
 Craig Pierson, Senior Project Manager  
**DTZ**  
 Anya Ostry, Broker  
**Servco Builders**  
 Chris Webb, President  
**American Interiors**  
 Chris Froling, Furniture Vendor

TENANT IMPROVEMENT NOMINEES



**Project: Ritz Prime Seafood**  
**Nominee(s):**  
**Grill Concepts**  
 Mike Weinstock, Founder



**Project: Cox Castle Park Place Office**  
**Nominee(s):**  
**Cox Castle Nicholson, LLP**  
 Dave Wensley, Partner  
**Turelk, Inc.**  
 Michael, Paselk, Executive Vice President  
**Source Creative Office Interiors**  
 Mike Manser, President



**Project: Brookfield Residential**  
**Nominee(s):**  
**Gensler**  
 Sandi Warneke, Principal  
 Dianne Dodge, Project Manager  
 MinhHa Nguyen, Job Captain  
 Hannah Zalusky, Designer  
**Brookfield Residential**  
 Adrian Foley, Chief Operating Officer



**Project: Opus Bank, "Bank of the Future"**  
**Nominee(s):**  
**Gensler**  
 James Young, Design Director  
 Lindsay Green, Project Manager  
 Alison Wineland, Interior Designer  
**Opus Bank**  
 Mark Gordon, Senior Vice President  
**Turelk, Inc.**  
 Mike Paselk, President

**Project: KBS Realty**  
**Nominee(s):**  
**Casco Contractors**  
 Cheryl Osborn, President/CEO  
 Tim Imber, Director of Construction



**Project: MemorialCare Medical Foundation**  
**Nominee(s):**  
**KPRS Construction Services, Inc.**  
 Peter Livermore, Senior Project Manager  
**LPA, Inc.**  
 Maria Louie, Senior Project Manager  
 Amy Dicosola, Design Coordinator  
 Brenda O'Bryan, Interior Designer  
**MemorialCare Medical Foundation**  
 Jim Kobiashi, Project Manager  
 John Somers, Construction Coordinator



# Specialty Deposit Services

With financial strength and industry experience, we provide expert banking services to handle the most urgent and technical banking requirements of court appointed fiduciaries nationwide:

- Liquidating Trustee
- State & Federal Court Receivers
- Restructuring Professionals
- Chief Responsible Officers
- Disbursing Agents
- Professional Asset Management Fiduciaries
- Chapter 11 & Chapter 7 Trustees
- Attorney Referred Debtor's in Possession

For more information, contact [SDS@eastwestbank.com](mailto:SDS@eastwestbank.com)



[eastwestbank.com](http://eastwestbank.com)

Equal Housing Lender Member FDIC

TENANT IMPROVEMENT NOMINEES



**Project:** Sub-Zero / Wolf Showroom  
**Nominee(s):** Driver SPG  
Karl Kreutziger, President  
**Zingg Design**  
Mark Zingg, President/CEO



**Project:** Mark IV Capital  
**Nominee(s):** H. Hendy Associates  
Todd Shumaker, Senior Designer  
**Mark IV**  
Paul Cate, CEO/President  
**Driver SPG**  
Michael Harness, Senior Project Manager



**Project:** IXI Technology  
**Nominee(s):** Trendzitions  
Chris Tooker, President/CEO



**Project:** Hueston Hennigan LLP  
**Nominee(s):** SAA  
Steven Drucker, Design Principal

**Project:** Tony Pepperoni  
**Nominee(s):** Marquis Construction, Inc.  
David James, Director of Construction



**Project:** Lennar Multifamily Communities  
**Nominee(s):** Pacific Tusk Builders  
David Goldberg, Project Manager/President  
**Transwestern**  
Travis Slunaker, Construction Manager  
Penny Boeck, Portfolio Manager  
**CDL Associates, Inc.**  
Carolyn Doyle, President  
**Gensler**  
Matt Gammel, Senior Associate  
**Lennar Multifamily**  
Gary Pugh, Design Manager



A FULLY INTEGRATED REAL ESTATE COMPANY PROVIDING ALTERNATIVE INVESTMENTS SINCE 1998



PROUD SPONSOR OF THE 5TH ANNUAL SPIRE AWARDS



2050 MAIN STREET, SUITE 650 | IRVINE, CA 92614 | P: 949.442.1000 | WWW.PASSCO.COM  
IRVINE, CA | DENVER, CO | AUSTIN, TX | DALLAS, TX | ATLANTA, GA



MemorialCare Medical Center, San Juan Capistrano

**KPRS Construction:** Building the future with our clients. KPRS Congratulates MemorialCare Medical Center on their CREW SPIRE Awards Nomination.

Learn what we can do for you at [www.kprsinc.com](http://www.kprsinc.com).

License No. 751130

[www.kprsinc.com](http://www.kprsinc.com)



PHILANTHROPY NOMINEES



**Nominee(s):**  
**Sean Chaffins, Vice President**  
Banc of California  
**Philanthropic Involvement:**  
Boys & Girls Club of Fullerton  
Fullerton Rotary  
Fullerton Cares Autism Foundation  
Tustin Public School Foundation  
Big Brothers & Big Sisters Foundation



**Nominee(s):**  
**Chip Williams, Principal**  
Gensler  
**Philanthropic Involvement:**  
Leukemia & Lymphoma Society  
(LLS) Board Member  
Seabreeze Church, Youth Ministry



**Nominee(s):**  
**Jason Rich,**  
**Vice President**  
Snyder Langston  
**Philanthropic Involvement:**  
B.R.I.D.G.E.



**Nominee(s):**  
**Grant Freeman,**  
**Principal**  
Freeman Realty  
Company, Inc.  
**Philanthropic Involvement:**  
American  
Cancer Society



**Nominee(s):**  
**Chris Taylor,**  
**Vice President**  
**Division Leader**  
Southland  
Industries  
**Philanthropic Involvement:**  
CHOC  
American Heart  
Association



**Nominee(s):**  
**Adele Green, Senior Vice President,**  
**Small Business Banking**  
Bank of America  
**Philanthropic Involvement:**  
Project Access  
SCORE  
Community service at CHOC with  
Blu, her licensed therapy dog  
LEAD (Leadership, Education,  
Advocacy and Development)



**Nominee(s):**  
**Mark and Jan Hilbert, Owner/**  
**President**  
Hilbert Properties  
**Philanthropic Involvement:**  
Chapman University



**Nominee(s):**  
**The PIMCO Foundation**  
Douglas Hodge, CEO/President  
**Philanthropic Involvement:**  
Share the Harvest Event in  
Newport Beach  
Emerging Enterprise Program (EEP)  
"Global Week of Volunteering"



**Nominee(s):**  
**Hoag Memorial Hospital**  
**Presbyterian - Real Estate,**  
**Facilities, Construction, and**  
**Operations (REFCO)**  
Karen Torres, Director, Real Estate  
Gwyn Parry, M.D., Director  
Community Health and Community  
Benefit Program  
Robert Braithwaite, President/CEO  
**Philanthropic Involvement:**  
Providence Speech and Hearing  
Center  
Linda Smith, CEO

**Willis Towers Watson**

See risk as a path to growth

We are proud to support the SPIRE award nominees

**BUILDING RENOVATIONS NOMINEES**

**Project: 2020 Main Building Renovation**  
**Nominee(s):**  
**Pacific Design Directions, Inc.**  
 Susan Stoneburner, President  
 Matt Agle, Division Manager  
 Glenn Pillsbury, Superintendent  
**Cushman & Wakefield**  
 Scott Sheridan, Senior Project Director  
**Gensler & Associates**  
 Steve Butler, Associate



**Project: Festival of Arts**  
**Nominee(s):**  
**KPRS Construction Services, Inc.**  
 Vince Bakulich, Senior Project Manager  
 Doug Hood, Superintendent  
 Adam Moler, Project Engineer  
**Festival of Arts**  
 Fred Sattler, Board President  
**Bauer Architects**  
 Jay Bauer, Principal  
 Greg Tate, Project Architect



**Project: The VineOC**  
**Nominee(s):**  
**Irvine Company**  
 Tom Greubel, Regional Vice President, Leasing  
 Jeff Shaw, Senior Director, Leasing  
 John Koga, Vice President, Planning & Design  
 Imelda Delherra, Senior Director, Construction  
 Lauren Kelly, Senior Vice President, Marketing, Office Properties  
 Kristin Jenkin, Director, Interior Architecture  
 Jessica Tracy, Manager, Construction  
 Rossi Coyle, Senior Manager, Operations  
 Mike Major, Vice President, Landscape Architecture



**Project: Avalon**  
**Nominee(s):**  
**Bixby Land Company**



**Project: Lyon Living**  
**Nominee(s):**  
**SAA**  
 Rick Shlemmer, Principal

**INNOVATIVE WORKSPACES**



[bixbyland.com](http://bixbyland.com)

**CONGRATULATIONS TO ALL AWARD WINNERS**

**PARK PLACE**

[PARKPLACEIRVINE.COM](http://PARKPLACEIRVINE.COM)

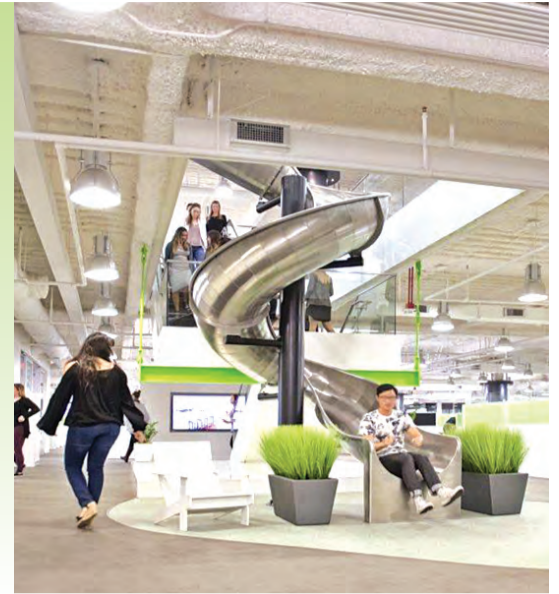


**BUILDING RENOVATIONS NOMINEES**

**Project: Harbor Distributing**  
**Nominee(s):**  
**Gensler**  
 James Young, Design Director  
 Anne Bretana, Project Manager  
 Mark McManus, Associate  
 Jaimelynn Shah, Senior Associate  
**Harbor Distributing**  
 Tommy Reyes, President  
**ARCO National Construction Company, Inc.**  
 Tom Strickland, President



**Project: Confidential Technology Firm**  
**Nominee(s):**  
**Confidential Technology Firm**  
 Jerry Kingkade, Vice President of Sales  
**Gensler**  
 Dianne Dodge, Senior Associate  
 David Loyola, Principal  
**Howard Building Corporation**  
 Pete Cali, Project Superintendent  
**CBRE**  
 Travis Boyd, Executive Vice President  
**LBA**  
 Eric Brown, Director of Leasing & Development



**Project: Smart Circle International**  
**Nominee(s):**  
**SAA**  
 Rick Shlemmer, Principal



**Project: 33.7 North**  
**Nominee(s):**  
**Bixby Land Company**



**Project: The Michelle Building**  
**Nominee(s):**  
**Kelemen Caamano Investments**  
 Tibor Kelemenm President



**Project: Newport Gateway Revitalization**  
**Nominee(s):**  
**The Irvine Company**  
 Kristin Jenkin, Director of Interior Architecture  
**Gensler**  
 Paul Morford, Associate  
**Whiting-Turner**  
 Jeff Chang  
**Systems Source**  
 Brooke Deutz



[www.justimagineidaho.com](http://www.justimagineidaho.com)

Find 15552 Hwy 20-26, Caldwell, ID on Loopnet.com

**LIGHT INDUSTRIAL SITE**

Amazing Opportunity in Canyon County, Idaho! 24.328 acres, 2 parcels, zoned M-1. Existing shop with separate finished area, meeting rooms, his/hers restrooms & kitchen. Dual zoned heating and A/C. Easy freeway access, within 25 minutes of the Boise Airport. City sewer and water have been pulled to the site. Two 8-inch Sewer stubs sit 400' and 800' of the SW corner of the property. Water Main brought along southern boundary from SW to SE Corners.

<http://silverhawkrealty.com/commercial-listings/>

**CALL NOW!**

Office: 2805 Blaine St., Ste. 200  
 Caldwell, ID 83605  
 Website: [www.silverhawkrealty.com](http://www.silverhawkrealty.com)

- 24.33 +/- ACRES | ONLY \$1.23/SQ. FT.
- **LOW TAXES!**
- STATE TAX INCENTIVES AVAILABLE
- NEW CITY SEWER & WATER TO PROPERTY
- WORKFORCE TRAINING AVAILABLE
- IRRIGATION AVAILABLE



**TRACY KASPER**  
 Broker, Owner  
 208.867.2709  
[tracy@justIMAGINEIdaho.com](mailto:tracy@justIMAGINEIdaho.com)

**TODD MOFFIS**  
 REALTOR®  
 208.250.0567  
[tmoffis@silverhawkrealty.com](mailto:tmoffis@silverhawkrealty.com)

You  
 in**SPIRE** Us.



**Congratulations to all**  
 of the SPIRE Awards winners and  
 nominees. We celebrate your accomplishments  
 and commitment to superior performance in real estate.



To find out more about our properties, visit [IrvineCompanyOffice.com](http://IrvineCompanyOffice.com) or call 949.720.2550

**SALES NOMINEES**



**Project: MetroCenter at South Coast**  
**Nominee(s):**  
**McCarthy Cook**  
 Tom McCarthy, Principal  
 Ed Cook, Principal



**Project: Santa Ana Apartment Portfolio**  
**Nominee(s):**  
**Sperry Van Ness/M.J.M. And Associates, Inc.**  
 Mark Mimms, Managing Director



**Project: Imperial Distribution Center**  
**Nominee(s):**  
**Cushman & Wakefield**  
 Jeff Chiate, Executive Director  
 Rick Ellison, Executive Director



**Project: 3800-3810 E. Coast Hwy, Corona Del Mar**  
**Nominee(s):**  
**Newmark Grubb Knight Frank**  
 Ian Brown, Managing Director



**Project: 8925 Orangethorpe**  
**Nominee(s):**  
**Colliers International**  
 Clyde Stauff, Senior Executive Vice President  
 Bret Hardy, Managing Director  
**Chaparral Land Company**  
 Graham Weiss, Principal

**Project: Archstone Yorba Linda**  
**Nominee(s):**  
**Moran & Company**  
 Tom Moran, Partner



**Project: 5701 Skylab, Huntington Beach**  
**Nominee(s):**  
**Cushman & Wakefield**  
 Jeff Chiate, Executive Director  
 Rick Ellison, Executive Director  
 Randy Ellison, Associate Director  
 Kyle McGillen, Associate

**ORANGE COUNTY BUSINESS JOURNAL**  
*The Community of Business.*  
**TOP REAL ESTATE DEALS**  
**SPECIAL REPORT**

**SHOW OFF YOUR**  
**BIGGEST DEALS OF 2015!**

<b>Publication Date</b> March 14, 2016	<b>Ad Materials</b> March 7, 2016
<b>Space Reservations</b> March 4, 2016	<b>The List</b> Title Companies

**For more information, contact Sheldon Ascher at 949.833.8373 x 217 or ascher@ocbj.com.**



**Project: Parker - Summit VII 35 Enterprise, Aliso Viejo**  
**Nominee(s):**  
**CBRE**  
 Carol Trapani, 1st Vice President  
 Allison Schneider, Vice President  
 Ted Snell, Senior Vice President  
 Jake Stickel, Senior Vice President  
 Eric Snell, Associate  
 Linda McCord, Client Services Specialist



**Project: CF II Buena Park Mall LLC**  
**Nominee(s):**  
**CBRE**  
 Phil Voorhees, Senior Vice President  
 Kirk Brummer, Director  
 Preston Fetrow, Senior Vice President  
 Todd Goodman, Executive Vice President  
 John Read, 1st Vice President  
 Matthew Burson, Finance Director  
 Megan Wood, 1st Vice President  
 Walter Pagel, Sr. Vice President  
 Daniel Samulski, Senior Vice President

**Project: Burnham-Ward Properties LLC**  
**Nominee(s):**  
**Burnham USA**  
 Scott Burnham, CEO



SALES NOMINEES



**Project: HFF Orange County Office Investment Sales Foothill Plaza**  
**Nominee(s):**  
HFF  
Ryan Gallagher, Senior Managing Director  
Mike McCann, Managing Director  
Derreck Barker, Associate Director



**Project: GP's Landing**  
**Nominee(s):**  
Khoshbin Company, Inc.  
Manny Khoshbin, Principal

**Project: AT&T Anaheim Campus**  
**Nominee(s):**  
Cushman & Wakefield  
Jeff Chiate, Executive Director  
Rick Ellison, Executive Director  
Randy Ellison, Associate Director



**Project: HFF Orange County Office Investment Sales - 1301 Dove**  
**Nominee(s):**  
HFF  
Ryan Gallagher, Senior Managing Director  
Mike McCann, Managing Director  
Derreck Barker, Associate Director



**Project: HFF Orange County Office Investment Sales - Quintana**  
**Nominee(s):**  
HFF  
Ryan Gallagher, Senior Managing Director  
Mike McCann, Managing Director  
Derreck Barker, Associate Director



**Project: HFF Orange County Office Investment Sales - 5000 Birch**  
**Nominee(s):**  
HFF  
Ryan Gallagher, Senior Managing Director  
Mike McCann, Managing Director  
Derreck Barker, Associate Director



**Project: HFF Orange County Office Investment Sales - 18201 Von Karman**  
**Nominee(s):**  
HFF  
Ryan Gallagher, Senior Managing Director  
Mike McCann, Managing Director  
Derreck Barker, Associate Director



**“No law firm does more real estate finance than Sheppard Mullin.”**  
**Find out why.**

No firm does more real estate finance legal work for major institutional lenders than Sheppard Mullin. Our clients are the best of the best in real estate finance, including top financial institutions, major banks and more.

How can we help you? Contact Partner Dean Demetre at [ddemetre@sheppardmullin.com](mailto:ddemetre@sheppardmullin.com) or 714.513.5100.

**SheppardMullin**

[www.sheppardmullin.com](http://www.sheppardmullin.com) | [www.bankruptcylawblog.com](http://www.bankruptcylawblog.com)

Beijing | Brussels | Century City | Chicago | London | Los Angeles | New York | Orange County | Palo Alto  
San Diego (Downtown) | San Diego (Del Mar) | San Francisco | Seoul | Shanghai | Washington, D.C.

DWB

DON WILSON BUILDERS

*Celebrating 60 years of excellence in real estate!*

Congratulates the 2016  
Spire Award Recipients



# Mark your calendars for these 2016 CREW-OC Events!

Date	Event	Location
March 10	CREW-OC SPIRE Awards	Center Club
April 19	Luncheon / Panel Discussion	Pacific Club
May 10	Luncheon / Panel Discussion	Pacific Club
June 16-17	2016 CREW Network Spring Leadership Summit	Detroit, MI
July 19	Luncheon / Panel Discussion	Pacific Club
August	Annual Summer Party	TBA
September 20	Luncheon / Panel Discussion	Pacific Club
October 19	2016 CREW Network Fall Leadership Summit - prior to convention	New York, NY
October 19-22	2016 CREW Network Convention & Marketplace	New York, NY
October	Annual Mixer	TBA
November 8	Luncheon / Panel Discussion	Pacific Club

## 2016 Annual Sponsors

Platinum **Brower** MILLER + COLE **CapitalOne** EAST WEST BANK ORANGE COUNTY BUSINESS JOURNAL

Gold **BEHR** | **KILZ** **BLACKROCK** **Duke REALTY** **eljs** **NELSON PAVING** **RUTAN** **SALUNDERS** **squarmilner** **TROUTMAN SANDERS** **UNITED PAVING CO.** "When Integrity Counts"

- Silver Craig Realty Group | Greenlaw Management | Langan | PM Realty Group | Sunwest Bank | Ware Malcomb
- Bronze Parking Concepts, Inc.
- Affiliate Able Services | American Technologies, Inc. | Har-Bro | Humanscale | Painting Unlimited, Inc. | Pivot Interiors
- Friend Advantage Painting Solutions | Hollister