



LEADING K-12 SCHOOLS GUIDE

CUSTOM CONTENT • September 23, 2024

Presented by





CREAN LUTHERAN HIGH SCHOOL

GREETINGS IN THE NAME OF OUR LORD JESUS CHRIST!

It is a joy and honor to welcome and introduce you to a special ministry in Irvine, CA: Crean Lutheran High School. This year, we continue to celebrate God's faithfulness, amazing grace, and the many blessings He has poured into our ministry as we celebrate our 18th academic year. We invite you to come and see what the Lord is doing at Crean Lutheran High School.

OUR MISSION

While much is changing in this world and on our campus, as we continue to grow and add to our campus and community, one thing hasn't changed: our mission and commitment to *Proclaiming Jesus Christ Through Excellence in Education!*

OUR LEARNING OUTCOMES

In support of our mission, our school-wide learning outcomes revolve around Christian faith, lifelong learning, and serving others. These desired outcomes are simply: ***I am a Christian; I am a Learner; I am a Servant.*** In the fulfillment of reaching each of these outcomes, Crean Lutheran seeks to teach and live by God's grace through a guiding Biblical worldview. Through the nurturing lens of God's Word, along with the power of the Holy Spirit, we pray our students' faith will grow and be equipped to understand, view, and engage the culture around them - proclaiming Jesus Christ.

OUR VALUES

In order to support our mission and achieve our learning outcomes and vision, Crean Lutheran High School seeks to live out our five core values daily. We value **FAITHFULNESS** to our Lord and Savior, Jesus Christ. We value **EXCELLENCE** as the Christ-honoring approach to work as unto the Lord (*Colossians 3:23-24*), using our God-given gifts to the very best that we can. We value **STEWARDSHIP** of our time, talents, treasures, and testimony of faith, recognizing that all that we have belongs to the Lord. We value **SERVICE** because Christ first loved and served us; we embrace service when we actively and joyfully serve while loving God and others. We value **COMMUNITY**, recognizing that what unites us in Jesus Christ as the Saints family is greater than any of our differences that could divide us.

By the grace of God, Crean Lutheran High School strives to continue to be a safe haven and a beacon that shines the light of Jesus Christ in a world of spiritual darkness.

OUR VISION

Our Spirit-led and committed faculty and staff continue to embrace and pursue excellence and are committed to providing loving care for our students. They love the Lord, excel at and love what they do, and love our students. Since today's world is increasingly complex and technologically advancing at an incomprehensible pace, our efforts in the classroom are future-oriented and responsive to the rapidly changing demands and needs of our students. Together, we partner as students, parents, school, church, and community in pursuit of the best educational practices in a Christ-centered environment, serving our Lord and proclaiming Jesus Christ.

OUR PASSION

The love of God and of Jesus Christ, the love of our students and their families, and the love of what we do in our daily service to the Lord compel those who serve at Crean Lutheran High School.

There are no "do-overs" in high school. The Crean Lutheran experience promotes an engaged student body, encouraging students to engage in Christian faith, embark on lifelong learning, and embrace a life of serving mankind. Students are encouraged to be active participants in activities, the arts, and athletics to have a robust four-year transformative experience.



Thank you for the time spent getting to know more about and considering the Crean Lutheran High School community. We hope you're led and compelled to become a member of our blessed Saints family!

In His love and mine,

DR. JEFFREY BEAVERS, ED.D., LMFT
EXECUTIVE DIRECTOR | CEO

12500 Sand Canyon Ave. Irvine, California 92618

(949) 387-1199

Scan the QR code or visit creanlutheran.org to learn more!



DECIDEDLY **CHRISTIAN!** DISTINCTIVELY **EXCELLENT!**



CREAN LUTHERAN HIGH SCHOOL



2023 NATIONAL BLUE RIBBON SCHOOL

20:1

Average class size

184:1

Student to counselor ratio

MULTIPLE LEARNING OPTIONS

Students may take classes in various settings, including on-campus, online, and blended (a combination of on-campus and online).

CLASS OF 2024

97%

Attending a college or university

\$17.8

MILLION awarded in scholarships

\$67K

Average scholarship per student

25

AP COURSES

67

HONORS COURSES

22

DUAL CREDIT COURSES

(Up to 80 college units)

4

COHORT PROGRAMS

*Business • Law
Engineering • Medical*

27

VARSITY SPORTS

JOIN US!

ATHLETIC INFORMATION NIGHT

October 15

6:00 - 8:00 p.m.

OPEN HOUSE

November 19

6:30 - 8:00 p.m.

SHADOW DATES

See dates and register at creanlutheran.org/admissions.





MAKE A CHANGE for the Best

ENROLL TODAY!
AND WE WILL
WAIVE
REGISTRATION + APPLICATION FEE
FOR NEW FAMILIES
VALID THRU 12/31/2024

FAIRMONT™ | **iSP** International Schools Partnership
—SCHOOLS—

Fairmont Schools has a seven-decade history of putting students first, and the educational outcomes to prove a culture of high expectations creates learners who thrive. Offering P-12 instruction across five Orange County campuses, Fairmont unleashes the genius in each child, whether a “late bloomer” or the highest achiever, empowering them to amplify their strengths and talents to reach their highest potential. Students are prepared to be future-ready in an ever-changing world, and the educational community embraces a growth mindset and fosters a culture of excellence. ***From STEM to liberal arts, from cultural exchange opportunities to athletics and visual and performing arts, a Fairmont education places no limits on what your child can achieve. Where will Fairmont Schools take your child?***



714-583-6919 | EXCELATFAIRMONT.COM

Anaheim | Anaheim Hills | North Tustin | San Juan Capistrano



Proven Results

Fairmont students perform in the top percentiles in math, science, and critical thinking skills year after year. The curriculum prepares them to work, on average, a grade level ahead of peers in public school programs. High school graduates are routinely offered admission to the nation's top colleges and universities.



Empowered Educators

Fairmont employs caring, passionate educators who participate in thoughtful training and ongoing evaluation. Teachers are skilled practitioners of the art and science of education. They lead from the heart - connecting with students on a personal level and partnering with parents to create memorable educational experiences.



Balanced Approach

Fairmont's educational program combines time-honored fundamentals with innovative approaches to learning, balancing intellectual growth with social and emotional well-being. From preschool through high school, students are challenged to strive for their best while understanding that care for themselves and others is fundamental to success in school and in life.



Culture of Excellence

Fairmont students are focused, prepared, and motivated. A spirit of teamwork, collegiality, and mutual respect brings the community together and motivates students to make a difference. Fairmont believes in the rewards of working hard, taking risks, and never giving up.



Specialized Programs

Students receive one-on-one guidance to help them discover unique strengths and talents through a multitude of academic, visual, and performing arts, and athletic opportunities. Campuses feature a variety of specialized program offerings designed to appeal to a wide range of student interests and talents.



Continuity of Instruction

The most established secular, co-ed P-12 private school in Orange County, Fairmont has been educating young minds and nurturing young hearts since 1953. With programs that begin in preschool and culminate with a high school diploma, students can experience a Fairmont education from start to finish.



Care for Community

Community service has been a hallmark of a Fairmont education since its founding and continues to drive a spirit of connectedness, compassion, and civic engagement. Students routinely lead service projects and philanthropic work in the local community and around the world.

83:1

HIGH SCHOOL STUDENTS TO COLLEGE COUNSELORS

100%

OF STUDENTS WHO HAVE BEEN AT FAIRMONT SINCE AT LEAST 7TH GRADE WERE ADMITTED TO A TOP 100 COLLEGE



1ST PLACE
NATIONAL NASA
HOUSTON SPACE
CENTER COMPETITION



IB WORLD SCHOOL
1 of the few schools in California to offer the complete IB continuum (P-12)



#1 SCHOOL IN CALIFORNIA
Middle School
Academic Pentathlon



NATIONALLY-RANKED
SPEECH AND
DEBATE PROGRAM





FORWARD IN VISION, ROOTED IN TRADITION.



**MATER DEI
HIGH SCHOOL**

At Mater Dei, we believe that your child deserves an education that not only challenges the mind but also nurtures the heart and spirit. A Mater Dei education is a journey that ignites intellectual curiosity, cultivates critical thinking, and empowers students to navigate the challenges of an ever-changing world. With a curriculum grounded in rigorous core subjects like mathematics, sciences, humanities, and languages, we ensure that each student is not only well-prepared academically but also deeply enriched through the teachings of Christ. At Mater Dei, we're not just educating students; we're shaping the leaders of tomorrow.

Our educators are the heart of our institution. Faculty members are not only experts in their field but also deeply committed to the success and well-being of every student. Our faculty goes beyond traditional teaching, offering real-world experiences and creating opportunities that inspire students to explore their passions and realize their full potential. With a deep commitment to the success and unwavering care of every student, Mater Dei teachers deliver instruction that challenges, supports, and prepares our students to thrive both in and out of the classroom.



THE JOURNEY TO BECOME A MONARCH STARTS NOW!

www.materdei.org/admissions • (714) 754-1175



Campus Tours • Shadow Days • Apply • Explore



A DISTINGUISHED DESTINATION OF EXCELLENCE SINCE 1950



FAITH & SERVICE

45K+ Hours Given Annually
1,000+ Organizations Served
160 Average Hours Per Graduate



COMPREHENSIVE ACADEMICS & SUPPORT

55 Honors & 21 Advanced Placement Courses
109 Electives
7 Full Time Counselors; 1 Academic Advisor



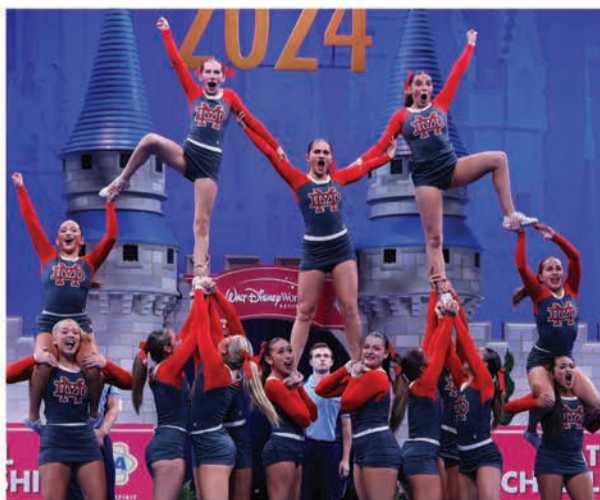
DYNAMIC CAMPUS LIFE

Engaging ASB Leadership Program
85+ Active Clubs in a Variety of Categories
6 Academic Teams



UNPARALLELED ARTS

82 Courses
Film and Media, Performing, and Visual Courses
48% of student body



NATIONALLY RECOGNIZED ATHLETICS

28 CIF Sports & 6 Club Teams
140 CIF State and National Championships
3 Heisman Trophy Winners; 11 Olympians



GLOBAL ALUMNI NETWORK

30K+ Worldwide
Robust Alumni Business Network
20% of Faculty/Staff are Alumni



A Place Where Students *Think & Live Well*

At Pacifica Christian High School, we teach our students to *think and live well*. We do this by providing a college-preparatory, liberal arts education for students from all neighborhoods.

Engaging students' minds to think well and shaping their hearts prepares them to enjoy an abundant life. *Thinking and living well* is about making connections—both intellectual and relational. It provides students with a fuller understanding of what it means to be human and provides them the freedom to find their place in God's created world.

Our students are free to live out their stories, fully becoming who God desires them to be. We provide students with opportunities that will change them for the better—by challenging and maturing them. We desire our students to be more

purposeful and courageous, more joyful and committed—prepared for all that God offers in their lives.

Learning to *think and live well* is a life-long process. But both the process—or even adventure—and the outcome produce joy. As such, we view a good education as an end unto itself. At the same time, a Pacifica education provides tangible benefits, like preparation for college, career, family, and service to the church and community. By approaching education as a joy-instilling, freedom-producing journey, we provide our graduates with a foundation for success in college, life, work, and faith.

Come discover Pacifica! Inquire or visit today at www.pacificaoc.org or call at (949) 887-2070.





Celebrating 10 Years of *Thinking and Living Well*



Inquire or Visit Today
www.pacificaoc.org

PACIFICA CHRISTIAN HIGH SCHOOL
1499 Monrovia Avenue, Newport Beach, CA 92663
(949) 887-2070

@pacificaoc



PACIFICA CHRISTIAN
HIGH SCHOOL · ORANGE COUNTY



Page Academy is a Costa Mesa private school offering STEM academics, 1:1 digital learning, and low student-to-teacher ratios to students in early childhood through 8th grade. We hold firm to the belief that education extends far beyond academic achievements alone. We strive to cultivate not only bright minds, but also well-rounded individuals who exemplify integrity. Through a comprehensive educational experience, we imbue our students with the values essential for leadership, community service, and forward-thinking innovation. We ensure that our students not only excel academically, but also graduate as outstanding individuals poised to make meaningful contributions to the world around them.



I cannot say enough good things about this school. Thank you Page for shaping our kids to be the best they can be!

– **Aimee P.**
Page Parent



www.pageacademyca.com



START HERE

Go anywhere

Schedule a
private tour at
pageacademyca.com



(946) 642-0411



657 Victoria Street, Costa Mesa, CA 92627



SAGE HILL
SCHOOL

Sage Hill School's Flexible Tuition Program Offers Need-Based Assistance to Prospective Families

At Sage Hill School, we uphold the ideal that a diverse student body is an integral part of a dynamic and strong school community. Sage Hill continues to be committed to ensuring that its student body reflects the demographics of Southern California.

The School's Flexible Tuition program is designed to adjust tuition based on each individual family's financial picture. The program allows families to qualify for reduced tuition as well as other student fees that may be incurred throughout the school year, including opportunities for bus transportation to campus.

"A Sage Hill School education should be accessible to all families," Director of Admission and Financial Aid Peter Jordan says. "This program is intended to be a sliding scale that is based on what a family can truly afford."

In determining the appropriate tuition for each family, income, expenses, and the number of private school or college tuitions currently being supported in the household are assessed. This information helps determine what adjustment to a student's yearly tuition might look like – helping to make Sage Hill School a more viable education option for all interested families in Orange County.

On average, Sage Hill School allocates more than \$4 million toward the program and plans to stay committed to increasing both the percentage of students receiving reduced tuition, as well as the funding of the Flexible Tuition program.

"The number of students who participate in the Flexible Tuition program went up to about 15% this year," Jordan says. "In the Fall of 2026, we are expanding our school program to include grades 7 and 8. This is an exciting time of growth for Sage Hill, and with an increased enrollment comes an

increased commitment to provide financial assistance to more families." Admission applications and Flexible Tuition applications opened on September 1 with a deadline of January 31, 2025. It is important to note that the admission application and the Flexible Tuition application are separate processes, but families will know what their financial aid award is at the same time acceptances are announced at the end of February.

Families who are actively seeking a Sage Hill education but are concerned about affordability should consider the Flexible Tuition program as Sage Hill aims to meet each family's demonstrated need.

To learn more about the Flexible Tuition program, visit www.sagehillschool.org/flexibletuition.

School Information

Sage Hill School
20402 Newport Coast Drive
Newport Coast, CA 92657
www.sagehillschool.org

Applications Now Open for 2025-2026 School Year!

Parents with prospective students entering grades 9-12 in Fall 2025 can apply now at www.sagehillschool.org/apply. Application deadline is **January 31, 2025**

Join Us for Admission Open House

Saturday, October 5
10:00 AM to 3:00 PM

Open to parents and prospective students in grades 5-11. Register now at www.sagehillschool.org/openhouse.

What Sets Sage Hill Apart?

College Counseling: With a 37:1 student-to-counselor ratio, Sage Hill offers a highly personalized, student-centered college application process focused on helping each student find the best college fit based on their academic profile, aspirations, talents and interests.

Service Learning: Service Learning provides students opportunities to explore community service opportunities and help create positive change. Through community partnerships, students are encouraged to develop and/or seek out service needs in the local and global communities that match their educational, personal and social interests.

Spring at Sage: Students are offered experiential opportunities for leadership, creativity and risk-taking beyond the traditional classroom. After

spring final exams, students spend a week participating in an intensive seminar or a group travel program.

Sage Hill Internship Program: Career exploration and assistance with resumes, interviews and job applications prepare students for work opportunities. SHIP offers real-life, hands-on work experience and exposure to potential careers.

Advisory Program: The advisory program provides guidance, mentoring and a sense of belonging from the very first day of school. Advisors encourage personal and academic growth of each student by fostering positive relationships and supporting each student throughout their Sage Hill School journey.

40+

AP, HONORS &
POST AP CLASSES

OVER

\$4M

IN FINANCIAL
ASSISTANCE
BUDGET

14

AVERAGE
CLASS SIZE



**YOUR JOURNEY.
YOUR SCHOOL.**

ADMISSION OPEN HOUSE

Open to parents and prospective
students in grades 5-11

Saturday, October 5
10:00 AM to 3:00 PM

Entry will occur every 35 minutes



Register for our Open House at:
sagehillschool.org/openhouse



**SAGE HILL
SCHOOL**

20402 Newport Coast Drive
Newport Coast, CA 92657
(949) 219-0100

Expanding to add 7th and 8th grades in 2026

APPLY NOW

The online application for the 2025-2026 school
year is now open for prospective students
entering grades 9-12 in the Fall of 2025.

Completed online applications are due by
JANUARY 31, 2024.

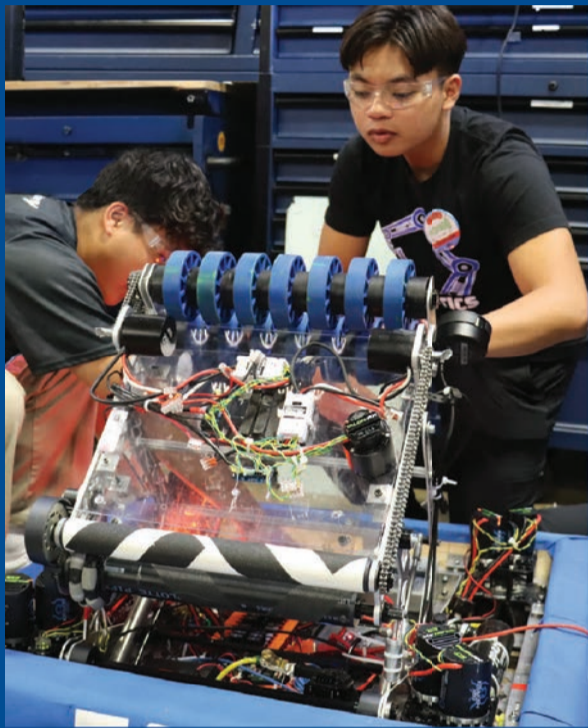


Begin the application
process today at:
sagehillschool.org/apply





Santa Margarita Catholic High School offers excellence in Catholic education. Through spiritual growth, moral development, academic excellence and nurturing support, SMCHS is committed to developing students with a sense of purpose, belonging and resilience. Santa Margarita offers academic tracks to meet the needs of varied learners, more than 85 clubs and activities, competitive character-building athletics, and an award-winning arts program. **Find It Here!**



SANTA MARGARITA CATHOLIC HIGH SCHOOL IMPORTANT DATES

OPEN HOUSE

OCTOBER 21, 5:00 P.M. – 7:30 P.M.

Campus tours, personalized presentations and complimentary food.

ATHLETIC INFORMATION NIGHT

NOVEMBER 6 | Go to: www.smhs.org/athletics/ain

This is a great opportunity to hear from each head coach and learn about their philosophy, summer camp and tryout information.

EAGLE ONLINE ACADEMY INFO NIGHT

OCTOBER 15, 7:00 P.M. | RSVP: www.smhs.org/online

Learn more about our online academy.

EASILY ACCESSIBLE

Freeway access, bus transportation and an active parent carpool are available for an easy commute to campus.



TOP RANKED

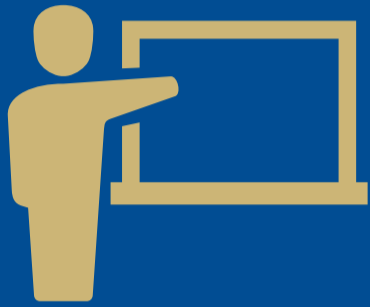
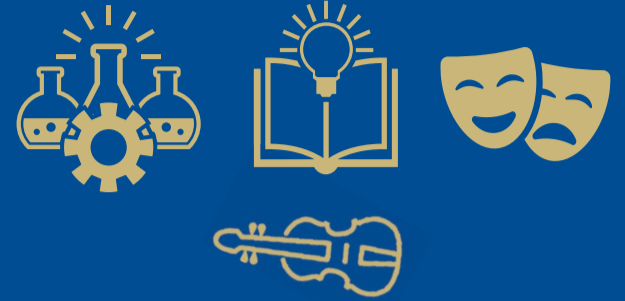
Ranked among the Top 40 most influential private high schools in the U.S.
- Academic Influence

A+ OVERALL GRADE
Niche.com



231

Courses offered



15:1

With a 15:1 student-teacher ratio and average class size of 23, SMCHS students enjoy smaller class sizes

17

counselors



7 School counselors

4 Wellness counselors

5 College counselors

1 NCAA college counselor for student-athletes



ATHLETICS

Eleven time recipient of the CIF-SS Commissioners Cup (Since inception of the school in 1987)

1 in 4

Students receive tuition assistance/scholarships

SCHOLARSHIP

33

CONSERVATORY COURSES

Home of TAPA, Talon Academy of Performing Arts, an after school conservatory

2,295

college acceptances (for the Class of 2024)

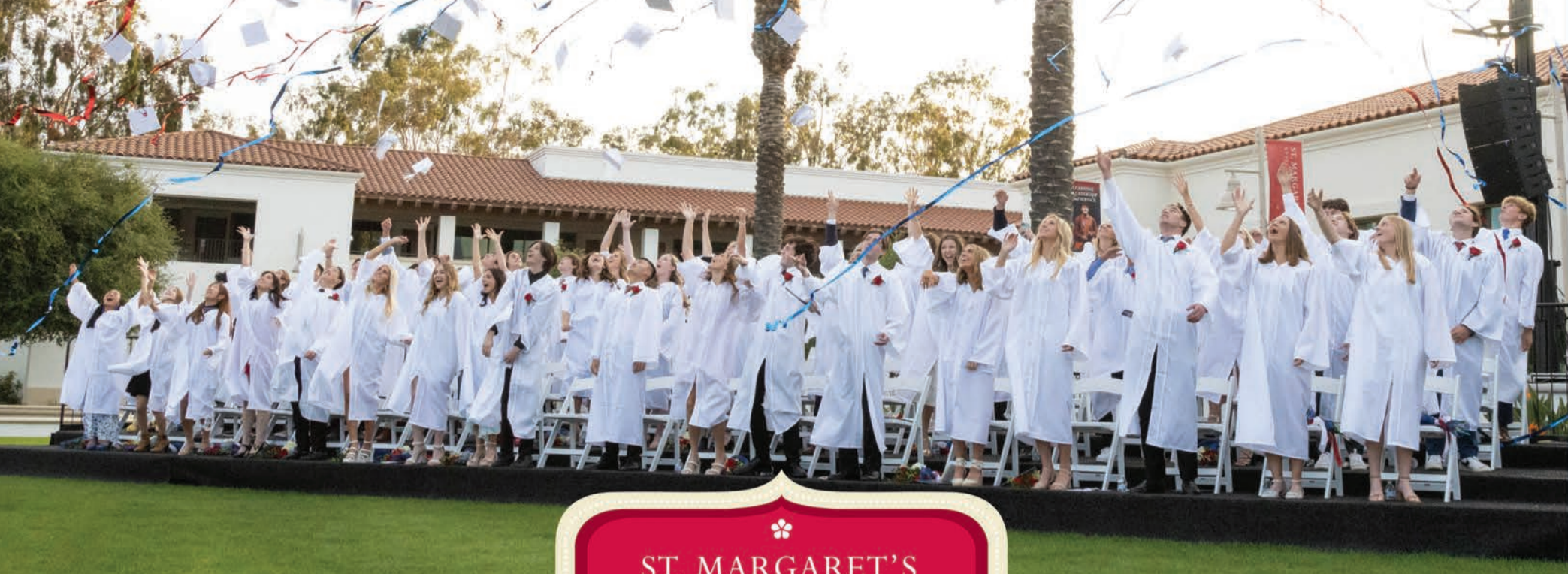
To view more college stats scan the QR code:



SANTA MARGARITA CATHOLIC HIGH SCHOOL

A Diocese of Orange School • An International Baccalaureate World School
22062 Antonio Parkway, Rancho Santa Margarita, CA 92688 • 949-766-6000
www.smhs.org @santamargaritaeagles facebook.com/smchseagles @SMCHSEagles
Accredited by the Western Catholic Education Association (WCEA) and the Western Association of Schools and Colleges (WASC)






ST. MARGARET'S
 EPISCOPAL SCHOOL

Academic Excellence, Innovation and Purpose

St. Margaret's Episcopal School is Orange County's premier independent school, educating 1,234 students, preschool – grade 12, not only as college-bound graduates, but also as productive, healthy and happy children today and successful adults tomorrow.

St. Margaret's vigorous liberal arts academic program is research-based, developmentally appropriate and coordinated from early childhood to graduation. The curriculum is strong and balanced, engaging and challenging students from the youngest age to discover and cultivate their unique talents and passions, to pursue their studies at the highest levels and to always seek new growth and learning. The breadth and depth of the academic program provide students choice and cultivate personal meaning, voice and relevance—critical components to lasting learning experiences.



Culture of Innovation

St. Margaret's continually looks forward to advance and innovate the academic program, paving exciting and rewarding paths for students. Technology-rich modern learning environments, makerspaces and studios are designed for today's students, as well as innovative instructional approaches and curriculum including a wide range of STEAM disciplines. Experiential, hands-on learning and interdisciplinary studies programs put students in real-world settings to apply their learning skills in leadership and service.

St. Margaret's college-preparatory curriculum offers a breadth of student choice through honors and challenging elective courses, including 26 Advanced Placement courses and unique offerings such as engineering, architecture, marine science, multivariable calculus, advanced biotechnology studies, software engineering and web design.

Renowned Faculty

More than 130 dedicated educators are renowned for their expertise, passion for education and their care and support of students. St. Margaret's recruits nationally and engages in a competitive hiring process to select the best faculty who embrace our mission. More than 64 percent hold advanced degrees and 11 hold doctoral degrees. Teachers, advisors, four college counselors, chaplains and coaches provide a solid framework of guidance and support. Through small class sizes, every student is known and loved.



137
FACULTY MEMBERS

64%
HOLD ADVANCED DEGREES

Opportunities for Exploration

Breadth of programs and opportunities abound for students in preschool through high school. Arts, athletics, experiential learning, retreats and outdoor education, service and leadership programs support student exploration of interests and personal growth.

From gross motor development in preschool to 26 CIF varsity sports, physical education emphasizes active and healthy living, integrity, teamwork, respect and spirited competition. Tartan Athletics has achieved 42 CIF-SS Championships, and eight State Championships.

Celebration and study of the arts are equally integral to the development of every student. The 45,000-square-foot Performing Arts Center and 6,000-square-foot Visual Arts Center support a vibrant arts curriculum in theater, dance, orchestra, band, choir and visual and media arts, challenging students to be creative thinkers, problem solvers and to find their unique voice. Students participate in more than 20 performing arts productions and six gallery exhibitions of their work each year.

26
CIF VARSITY SPORTS

 **42**
CIF CHAMPIONSHIPS

20
PERFORMING ARTS PRODUCTIONS AND

 **6**
GALLERY EXHIBITIONS ANNUALLY

College-Bound

All St. Margaret's graduates are qualified and prepared to matriculate to a four-year college or university. Graduates of the Class of 2024 attend an impressive list of schools, including Boston University, Columbia University, Cornell University, Duke University, Georgetown University, UC Berkeley, UCLA, University of Chicago, Lehigh University, Middlebury College, University of Michigan, New York University, Northwestern University, University of Pennsylvania, University of San Diego, University of Southern California, University of Texas at Austin, University of Virginia, Stanford University and Tulane University.

Transformative Tartan Experience

St. Margaret's Tartans are known for their character, poise and integrity. An inclusive, loving community rooted in shared values and an Episcopal identity is the foundation of student intellectual and spiritual growth. Dedicated adults and motivated peers surround students and foster a deep sense of personal belonging, health and happiness, instill a strong moral compass and inspire responsibility, leadership and service to the world around them. Unique programs in service learning, advisory, and cultural competency skills development support the transformative St. Margaret's student experience.



Founded in 1979, St. Margaret's is guided by its mission to educate the hearts and minds of young people for lives of learning, leadership and service.

ST. MARGARET'S EPISCOPAL SCHOOL
 31641 LA NOVIA
 SAN JUAN CAPISTRANO, CA 92675
 949.661.0108 | www.smes.org

ST. MARGARET'S EPISCOPAL SCHOOL

OUR

EVERYDAY

LASTS A LIFETIME

Students are able to explore, discover and learn so much and are so well supported here because they have a world of interests, natural talents and exciting paths to pursue. Vigorous academics, expert faculty, boundless opportunities and choices, engaging, vibrant learning environments, leading technology and resources. A spirit of excellence and innovation fuels a transformative experience that nurtures our students' development, well-being and character, and challenges them to their fullest potential.

Imagine the lifelong impact of what our everyday would mean for your child.



2024 ADMISSION OPEN HOUSE EVENTS

For more information and to register, scan the QR code or visit: smesopenhouse.org





**DEVELOPING
WORLD-SIZED HEARTS
& WORLD-CLASS MINDS
FOR 30 YEARS...**



ST. MARY'S SCHOOL

I.B. WORLD SCHOOL

30 YEARS

EDUCATING FUTURE GLOBAL CITIZENS

13 RELIGIONS

REPRESENTED IN STUDENT BODY

26 COUNTRIES

REPRESENTED IN STUDENT BODY

12 ART TECHNIQUES

THROUGHOUT ALL GRADES

23 LANGUAGES

SPOKEN BY STUDENTS

**715
STUDENTS
13 GRADE
LEVELS**

40 SPORTS TEAMS

FIELDED IN 11 SPORTS

6 SINGLE SUBJECTS

SCIENCE, CHRISTIAN ENRICHMENT, ARTS,
TECHNOLOGY & DESIGN, MUSIC AND P.E.

3 WORLD LANGUAGES

TAUGHT AS CORE SUBJECTS

1,800 ALUMNI

MAKING A DIFFERENCE IN THE WORLD

20 MUSICAL INSTRUMENTS

PLAYED BY STUDENT BODY



**NEW CAMPUS
EXPANSION
COMPLETED:
SEPTEMBER
2025**

**...AND DEVELOPING
GROUND-BREAKING
DESIGN THINKING
THE NEXT 30 YEARS.**

ST. MARY'S HAS BEGUN THE DESIGN THE FUTURE PROJECT CONSTRUCTION
WHICH WILL INTRODUCE A NEW TWO-STORY, 28,000-SQUARE-FOOT BUILDING
(HOUSING A ROBUST DESIGN CENTER & EARLY EDUCATION CENTER)
AND 40,000 SQUARE FEET OF BEAUTIFUL OUTDOOR COMMUNITY SPACES.



At St. Mary's, our vision is to prepare and inspire children to become courageous, caring, global citizens and enlightened leaders of tomorrow — those with world-sized hearts; world-class minds. As Orange County's only Early Education through Grade 8 International Baccalaureate and Design Thinking school, we have a distinctive educational model coupled with a culture of care, support, and innovation.

ADMISSION INFORMATION SESSIONS
THURSDAY OCTOBER 24 THURSDAY NOVEMBER 14
THURSDAY DECEMBER 12 THURSDAY FEBRUARY 6
APPLY, SCHEDULE A TOUR OR FOR MORE INFORMATION VISIT
www.smaa.org



DISCOVER MORE AT
WWW.SMAA.ORG


**ST. MARY'S
SCHOOL**
World-sized hearts. World-class minds.



ACADEMICS ARE IMPORTANT. **CHARACTER IS PARAMOUNT.**

TVT is not only a school but a strong community - one which will develop and foster your child's academic ability as well as invest in their character development. While academic success is important, there is much more to education. Test scores and college acceptances are merely one way we assess the quality of education at TVT. Equally important are the sense of pride and Jewish values we instill, and the community culture that we nurture. At TVT we know that the lessons students learn here will inspire them to create a better world.



Welcome to **TVT Community Day School**, where an exceptional education cultivates compassion, curiosity, and courage to make a better world. Located in Irvine, TVT offers a TK-12 experience grounded in inquiry and innovation with a strong emphasis on character and Jewish values.



TVT
Community
Day School

TARBUT.com

5 FEDERATION WAY
IRVINE, CA 92603
949.509.9500

*Founded in Loving Memory of
Naomi Gelman Weiss*



Harbor Day School

Harbor Day School *Step-by-Step to the Top*

Harbor Day School has earned a reputation for educational excellence with a comprehensive curriculum focused on encouraging the individual strengths of each student. Graduates become leaders in some of the finest high school and university programs in the country. Our alumni are a diverse and inclusive community thriving in business, law, medicine, entertainment, technology, sports, and the arts, to name a few. For them, Harbor Day is a home of lasting memories and lifelong friendships.

A place where timeless traditions and modern innovation come together, Harbor Day's state-of-the-art campus is a symbol of dedication to progress and transformational education. Harbor Day's motto, "Gradatim ad Summum" or "Step-by-step to the top," encompasses the school's mission and allows for steady personal progress, which in turn develops our eager, collaborative, and creative students who are



prepared for their secondary education and beyond.

Established in 1952, Harbor Day School is a private elementary school (K-8) located on a welcoming six-acre hillside in Corona del Mar, California. Recognized as the first independent school in Orange County, Harbor Day School provides an academically challenging, well-balanced education in a nurturing and inclusive family-centered environment. Our faculty inspires curiosity and a desire to learn, and cultivates in students the confidence, strong moral character, and perseverance to thrive. We celebrate diversity and traditions, value collaboration and innovation, and cherish our community and lifelong relationships.

Join us for our Open House on Saturday, October 26, at 9:00 a.m. RSVP online at <https://www.harborday.org/admission/open-house>.

Harbor Day School

Shine Bright!

ADMISSION
OPEN HOUSE

**SATURDAY,
OCTOBER 26, 2024**

9:00 AM - 11:00 AM

949.640.1410

LEARN MORE AT
[HARBORDAY.ORG](https://www.harborday.org)

KINDERGARTEN - GRADE EIGHT

LEADING K-12 SCHOOLS DIRECTORY

Name of School: Crean Lutheran High School
Head of School: Dr. Daniel Moyer, Principal
Address: 12500 Sand Canyon, Irvine, CA 92677
Website: www.creanlutheran.org
Grade Levels: 9-12
Total Enrollment: 1123
Student to Faculty Ratio: 20:1
Average Class Size: 20:1
Application Deadline for the 25/26 School Year: July 1, 2024
Type of School: Private

Name of School: Fairmont Schools
Head of School: Ms. Carolyn Lucia
Address: 1575 W. Mable Street, Anaheim, CA 92802
Campuses in Anaheim Hills, North Tustin, Anaheim, San Juan Capistrano
Website: www.fairmontschools.com
Grade Levels: Preschool – 12th grade
Total Enrollment: 2600
Student to Faculty Ratio: 12:1
Average Class Size: 20
Application Deadline for the 24/25 School Year: No deadline, rolling admissions
Type of School: A secular, co-educational Preschool-12th grade private school

Name of School: Harbor Day School
Head of School: Angi Evans
Address: 3443 Pacific View Drive, Corona del Mar, CA 92625
Website: www.harborday.org
Grade Levels: K-8
Total Enrollment: 416
Student to Faculty Ratio: 22 to 2 (grades K-5); 16 to 1 (grades 6-8)
Average Class Size: 22 (grades K-5) and 16 (grades 6-8)
Application Deadline for the 25/26 School Year: January 10, 2025
Type of School: Independent

Name of School: Mater Dei High School
Head of School: Michael Brennan, President and Frances Clare, Principal
Address: 1202 W. Edinger Avenue, Santa Ana, CA 92707
Website: www.materdei.org
Grade Levels: 9-12
Total Enrollment: 1,850
Student to Faculty Ratio: 25:1
Average Class Size: 25-30
Application Deadline for the 24/25 School Year: December 9, 2024 – Early
Acceptance Deadline: February 14, 2024 Regular Acceptance Deadline
Type of School: Coeducational, college preparatory Diocesan Catholic high school.

Name of School: Pacifica Christian High School - Orange County
Head of School: David O'Neil
Address: 1499 Monrovia Avenue, Newport Beach, CA 92663
Website: www.pacificaoc.org
Grade Levels: High School, 9-12
Total Enrollment: 345
Student to Faculty Ratio: 12:1
Average Class Size: 16-18
Application Deadline for the 25/26 School Year: January 17, 2025
Type of School: Private, Christian, Liberal Arts, College-prep, High School

Name of School: Page Academy
Head of School: Kristin Dickson
Address: 657 Victoria Street, Costa Mesa, CA 92627
Website: www.pageacademyca.com
Grade Levels: Infant (6 wks) through 8th grade
Total Enrollment: 150
Student to Faculty Ratio: Infant 4:1, Early Childhood 12:1, Elementary & Middle School 10:1
Average Class Size: 8
Application Deadline for the 25/26 School Year: Open enrollment
Type of School: Private non-denominational

Name of School: Sage Hill School
Head of School: Patricia Merz
Address: 20402 Newport Coast Drive, Newport Coast CA 92657
Website: www.sagehillsschool.org
Grade Levels: 9-12
Total Enrollment: 590
Student to Faculty Ratio: 7:1
Average Class Size: 14
Application Deadline for the 25/26 School Year: January 31, 2025
Type of School: Independent, Coed, College Preparatory

Name of School: Santa Margarita Catholic High School
Head of School: President Andy Sulick
Address: 22062 Antonio Parkway, Rancho Santa Margarita, CA 92688
Website: www.smhs.org
Grade Levels: 9-12
Total Enrollment: 1,823
Student to Faculty Ratio: 15:1
Average Class Size: 23
Application Deadline for the 25/26 School Year: Nov. 15, 2024
Type of School: Coeducational, college-preparatory Catholic high school under the leadership of the Diocese of Orange

Name of School: St. Margaret's Episcopal School
Head of School: Dr. Jeneen Graham
Address: 31641 La Novia, San Juan Capistrano, CA 92675
Website: www.smes.org
Grade Levels: Preschool through Grade 12
Total Enrollment: 1234 Students
Application Deadline for the 25/26 School Year: February 1, 2025
Type of School: Independent, College-Preparatory Day School serving Preschool through Grade 12

Name of School: St. Mary's School
Head of School: Doug Patterson
Address: 7 Pursuit, Aliso Viejo, CA 92656
Website: www.smaa.org
Grade Levels: Early Preschool – Grade 8
Total Enrollment: 715
Student to Faculty Ratio: (averages) Early Education 1:7, Lower School 1:10, Middle 1:20
Average class size: Early Education 12-16, Lower and Middle School 20-22
Application Deadline for the 25/26 School Year: January 6, 2025
Type of School: Independent, International Baccalaureate School

Name of School: TVT Community Day School
Head of School: Jill Quigley
Address: 5 Federation Way, Irvine CA 92603
Website: www.TARBUT.com
Grade Levels: TK-12
Total Enrollment: 856
Student to Faculty Ratio: 5:1
Average Class Size: 14
Application Deadline for the 25/26 School Year: February (Rolling)
Type of School: Independent / Jewish